

COMh-ccAS

User Guide Rev. 0.3 Preliminary

Table of Contents

1. General Information	1
1.1 Disclaimer	1
1.2 Intended Use	2
1.3 Terms and Conditions	3
1.4 Customer Support	3
1.5 Customer Service	3
1.6 Customer Comments	3
1.7 Symbols	4
1.8 For Your Safety	5
1.9 High Voltage Safety Instructions	5
1.10 Special Handling and Unpacking Instruction	5
1.11 Lithium Battery Precautions	6
1.12 General Instructions on Usage	6
1.13 Quality and Environmental Management	7
1.13.1 Disposal and Recycling	7
1.13.2 WEEE Compliance	7
2. Introduction	8
2.1 Product Naming Clarification	8
2.2 Product description	8
2.3 COM-HPC® Documentation	9
2.4 COM-HPC® Client Functionality	9
2.5 COM-HPC® Benefits	9
3. Product specification	11
3.1 Module Variants	11
3.1.1 Commercial Grade Modules (0°C to +60°C)	11
3.1.2 Extended temperature Grade Modules (E1, -25°C to 75°C)	11
3.1.3 Industrial Temperature Grade Modules (E2, -40°C to +85°C)	11
3.2 Accessories	12
3.2.1 CPU	12
3.2.2 Cooling	12
3.2.3 Evaluation Carrier	13
3.2.4 SO-DIMM Memory	13
3.3 Functional Specification	14
3.3.1 Technical Data	14
3.3.2 Block Diagram	15
3.3.3 Front Side	15
3.3.4 Back Side	16
3.3.5 Processor (CPU)	16
3.3.5 Plattform Controller Hub (PCH)	20
3.3.6 System Memory	21
3.3.7 High-Speed Interface Overview	22
3.4 Interfaces	23
3.4.1 PCIe	23
3.4.2 USB	24
3.4.3 SATA	24
3.4.4 Ethernet	25
3.4.5 Graphics Interfaces	25
3.4.6 Audio Interfaces	26

3.4.7 UART	26
3.4.8 General Purpose SPI interface	27
3.4.9 Boot SPI	27
3.4.10 eSPI	28
3.4.11 I2C	28
3.4.12 GPIO	28
3.4.13 SMB	29
3.5 Features	30
3.5.1 ACPI Power States	30
3.5.2 Embedded Controller - Hardware Monitor	30
3.5.3 TPM	31
3.5.4 Watchdog	31
3.5.5 Real-Time Clock (RTC)	31
3.5.6 NVME	32
3.5.7 Features on Request	32
3.6 Electrical Specification	33
3.6.1 Power Supply Specification	33
3.6.2 Power Management	34
3.7 Thermal Management	36
3.7.1 Heatspreader Plate Assembly	36
3.7.2 Active/Passive Cooling Solutions	36
3.7.3 Operating with Kontron Heatspreader Plate (HSP) Assembly	36
3.7.4 Operating without Kontron Heatspreader Plate (HSP) Assembly	36
3.7.5 Temperature Sensors	37
3.7.6 On-Module Fan Connector	37
3.8 Mechanical Specification	39
3.8.1 Module Dimensions	39
3.8.2 Module Height	39
3.8.3 Heatspreader Plate Assembly Dimension	40
3.9 Environmental Specification	40
3.10 Compliance	41
3.11 MTBF	41
4. COM-HPC Interface Connector	43
4.1 Connecting COM-HPC Interface Connector to Carrier Board	43
4.2 J1 and J2 signals	44
4.3 Connector J1	45
4.3.1 Pins A1 - A100	45
4.3.2 Pins B1 - B100	46
4.3.3 Pins C1 - C100	49
4.3.4 Pins D1 - D100	50
4.4 Connector J2	52
4.4.1 Pins E1 - E100	52
4.4.2 Pins F1 - F100	54
4.4.3 Pins G1 - G100	56
4.4.4 Pins H1 - H100	58
5. UEFI BIOS	60
5.1 Starting the UEFI BIOS	60
5.2 Navigating the UEFI BIOS	61
5.3 Setup Menus	61
5.4 Getting Help	61
5.5 UEFI Shell	62

5.5.1 Entering the UEFI Shell	62
5.5.2 Exiting the UEFI Shell	62
5.6 UEFI Shell Scripting	63
5.6.1 Startup Scripting	63
5.6.2 Create a Startup Script	63
5.6.3 Example of Startup Scripts	63
5.7 Firmware Update	63
6. Technical Support	64
6.1 Warranty	64
6.2 Returning Defective Material	64
7. Document Revision	66

1. General Information

1.1 Disclaimer

Kontron would like to point out that the information contained in this user guide may be subject to alteration, particularly as a result of the constant upgrading of Kontron products. This document does not entail any guarantee on the part of Kontron with respect to technical processes described in the user guide or any product characteristics set out in the user guide. Kontron assumes no responsibility or liability for the use of the described product(s), conveys no license or title under any patent, copyright or mask work rights to these products and makes no representations or warranties that these products are free from patent, copyright or mask work right infringement unless otherwise specified. Applications that are described in this user guide are for illustration purposes only. Kontron makes no representation or warranty that such application will be suitable for the specified use without further testing or modification. Kontron expressly informs the user that this user guide only contains a general description of processes and instructions which may not be applicable in every individual case. In cases of doubt, please contact Kontron.

This user guide is protected by copyright. All rights are reserved by Kontron. No part of this document may be reproduced, transmitted, transcribed, stored in a retrieval system, or translated into any language or computer language, in any form or by any means (electronic, mechanical, photocopying, recording, or otherwise), without the express written permission of Kontron. Kontron points out that the information contained in this user guide is constantly being updated in line with the technical alterations and improvements made by Kontron to the products and thus this user guide only reflects the technical status of the products by Kontron at the time of publishing.

Brand and product names are trademarks or registered trademarks of their respective owners.

©2023 by Kontron Europe GmbH

Kontron Europe GmbH
Gutenbergstraße 2
85737 Ismaning
Germany
www.kontron.com

1.2 Intended Use

THIS DEVICE AND ASSOCIATED SOFTWARE ARE NOT DESIGNED, MANUFACTURED OR INTENDED FOR USE OR RESALE FOR THE OPERATION OF NUCLEAR FACILITIES, THE NAVIGATION, CONTROL OR COMMUNICATION SYSTEMS FOR AIRCRAFT OR OTHER TRANSPORTATION, AIR TRAFFIC CONTROL, LIFE SUPPORT OR LIFE SUSTAINING APPLICATIONS, WEAPONS SYSTEMS, OR ANY OTHER APPLICATION IN A HAZARDOUS ENVIRONMENT, OR REQUIRING FAIL-SAFE PERFORMANCE, OR IN WHICH THE FAILURE OF PRODUCTS COULD LEAD DIRECTLY TO DEATH, PERSONAL INJURY, OR SEVERE PHYSICAL OR ENVIRONMENTAL DAMAGE (COLLECTIVELY, “HIGH RISK APPLICATIONS”).

You understand and agree that your use of Kontron devices as a component in High Risk Applications is entirely at your risk. To minimize the risks associated with your products and applications, you should provide adequate design and operating safeguards. You are solely responsible for compliance with all legal, regulatory, safety, and security related requirements concerning your products. You are responsible to ensure that your systems (and any Kontron hardware or software components incorporated in your systems) meet all applicable requirements. Unless otherwise stated in the product documentation, the Kontron device is not provided with error-tolerance capabilities and cannot therefore be deemed as being engineered, manufactured or setup to be compliant for implementation or for resale as device in High Risk Applications. All application and safety related information in this document (including application descriptions, suggested safety measures, suggested Kontron products, and other materials) is provided for reference only.



Handling and operation of the product is permitted only for trained personnel within a work place that is access controlled. Follow the “General Safety Instructions” supplied with the product.



You find the most recent version of the “General Safety Instructions” online in the download area of this product in our [Customer Section](#).



This product is not suited for storage or operation in corrosive environments, in particular under exposure to sulfur and chlorine and their compounds. For information on how to harden electronics and mechanics against these stress conditions, contact Kontron Support.

1.3 Terms and Conditions

Kontron warrants products in accordance with defined regional warranty periods. For more information about warranty compliance and conformity, and the warranty period in your region, visit <https://www.kontron.com/terms-and-conditions>.

Kontron sells products worldwide and declares regional General Terms & Conditions of Sale, and Purchase Order Terms & Conditions. Visit <https://www.kontron.com/terms-and-conditions>.

For contact information, refer to the corporate offices contact information on the last page of this user guide or visit our website [CONTACT US](#).

1.4 Customer Support

Find Kontron contacts by visiting: <https://www.kontron.com/en/support-and-services>.

1.5 Customer Service

As a trusted technology innovator and global solutions provider, Kontron extends its embedded market strengths into a services portfolio allowing companies to break the barriers of traditional product lifecycles. Proven product expertise coupled with collaborative and highly-experienced support enables Kontron to provide exceptional peace of mind to build and maintain successful products. For more details on Kontron's service offerings such as: enhanced repair services, extended warranty, Kontron training academy, and more visit <https://www.kontron.com/en/support-and-services>.

1.6 Customer Comments

If you have any difficulties using this user guide, discover an error, or just want to provide some feedback, contact [Kontron Support](#). Detail any errors you find. We will correct the errors or problems as soon as possible and post the revised user guide on our website.

1.7 Symbols

The following symbols may be used in this user guide of COMh-ccAS

simple Box



Info-Box



Important-Box



Alert-Box



Tip-Box



Help-Box



Todo-Box



Download-Box

1.8 For Your Safety

Your new Kontron product was developed and tested carefully to provide all features necessary to ensure its compliance with electrical safety requirements. It was also designed for a long fault-free life. However, the life expectancy of your product can be drastically reduced by improper treatment during unpacking and installation. Therefore, in the interest of your own safety and of the correct operation of your new Kontron product, you are requested to conform with the following guidelines.

1.9 High Voltage Safety Instructions

As a precaution and in case of danger, the power connector must be easily accessible. The power connector is the product's main disconnect device.



Warning

All operations on this product must be carried out by sufficiently skilled personnel only.



Electric Shock!

Before installing a non hot-swappable Kontron product into a system always ensure that your mains power is switched off. This also applies to the installation of piggybacks. Serious electrical shock hazards can exist during all installation, repair, and maintenance operations on this product. Therefore, always unplug the power cable and any other cables which provide external voltages before performing any work on this product. Earth ground connection to vehicle's chassis or a central grounding point shall remain connected. The earth ground cable shall be the last cable to be disconnected or the first cable to be connected when performing installation or removal procedures on this product.

1.10 Special Handling and Unpacking Instruction



ESD Sensitive Device!

Electronic boards and their components are sensitive to static electricity. Therefore, care must be taken during all handling operations and inspections of this product, in order to ensure product integrity at all times.

Do not handle this product out of its protective enclosure while it is not used for operational purposes unless it is otherwise protected.

Whenever possible, unpack or pack this product only at EOS/ESD safe work stations. Where a safe work station is not guaranteed, it is important for the user to be electrically discharged before touching the product with his/her hands or tools. This is most easily done by touching a metal part of your system housing.

It is particularly important to observe standard anti-static precautions when changing piggybacks, ROM devices, jumper settings etc. If the product contains batteries for RTC or memory backup, ensure that the product is not placed on conductive surfaces, including anti-static plastics or sponges. They can cause short circuits and damage the batteries or conductive circuits on the product.

1.11 Lithium Battery Precautions

If your product is equipped with a lithium battery, take the following precautions when replacing the battery.



Danger of explosion if the battery is replaced incorrectly.

- Replace only with same or equivalent battery type recommended by the manufacturer.
- Dispose of used batteries according to the manufacturer's instructions.

1.12 General Instructions on Usage

In order to maintain Kontron's product warranty, this product must not be altered or modified in any way. Changes or modifications to the product, that are not explicitly approved by Kontron and described in this user guide or received from Kontron Support as a special handling instruction, will void your warranty.

This product should only be installed in or connected to systems that fulfill all necessary technical and specific environmental requirements. This also applies to the operational temperature range of the specific board version that must not be exceeded. If batteries are present, their temperature restrictions must be taken into account. In performing all necessary installation and application operations, only follow the instructions supplied by the present user guide.

Keep all the original packaging material for future storage or warranty shipments. If it is necessary to store or ship the product, then re-pack it in the same manner as it was delivered. Special care is necessary when handling or unpacking the product. See Special Handling and Unpacking Instruction.

1.13 Quality and Environmental Management

Kontron aims to deliver reliable high-end products designed and built for quality, and aims to complying with environmental laws, regulations, and other environmentally oriented requirements. For more information regarding Kontron's quality and environmental responsibilities, visit <https://www.kontron.com/en/quality-management>.

1.13.1 Disposal and Recycling

Kontron's products are manufactured to satisfy environmental protection requirements where possible. Many of the components used are capable of being recycled. Final disposal of this product after its service life must be accomplished in accordance with applicable country, state, or local laws or regulations.

1.13.2 WEEE Compliance

The Waste Electrical and Electronic Equipment (WEEE) Directive aims to:

- Reduce waste arising from electrical and electronic equipment (EEE)
- Make producers of EEE responsible for the environmental impact of their products, especially when the product become waste
- Encourage separate collection and subsequent treatment, reuse, recovery, recycling and sound environmental disposal of EEE
- Improve the environmental performance of all those involved during the lifecycle of EEE

Environmental protection is a high priority with Kontron.

Kontron follows the WEEE directive.

You are encouraged to return our products for proper disposal.

2. Introduction

This user guide describes the COM-HPC® Client Size C Computer-On-Module COMh-ccAS made by Kontron and focuses on describing the module's special features. Kontron recommends users to study this user guide before powering on the module.

2.1 Product Naming Clarification

COM-HPC® defines a Computer-On-Module (COM), with all the components necessary for a bootable host computer, packaged as a super component. The product name for Kontron COM-HPC® Computer-On-Modules consists of:

Standard short form	Type	Module size	Processor family identifier	Available temperature variants
COMh-	c=client s=server	a = Size A (95mm x 120mm) b = Size B (120mm x 120mm) c = Size C (160mm x 120mm) d = Size D (160mm x 160mm) e = Size E (200mm x 160mm)	ID = IceLake D AP = AlderLake P AS = AlderLake S etc.	(none=) Commercial Extended (E1) Industrial (E2) Screened industrial (E2S)

Table 1: COM-HPC® Product Naming Clarification

2.2 Product description

The new COMh-ccAS, a COM-HPC® client module with increased graphics and computing power for high-performance computing, based on the 12th Gen Intel® Core™ S processors (S-series, former codename Alder Lake S). The COM-HPC® client module is particularly suited for versatile applications in areas such as networking, automation, measurement, medical, kiosk/retail, ticketing/vending, gambling & amusement/entertainment, and Artificial Intelligence (AI) in general, where intensive graphics and computing power is required. The module complies with the new industry standard COM-HPC®, which is specifically designed for high-performance computing. An important element is the fast PCI Gen5 connection. Like its siblings, the new module in size C (120x160mm) uses the evaluation carrier for all COM-HPC® client modules.

Key features are:

- Up to 16 cores (TDP range: 35 W-65 W) & 24 threads
- Memory: Max 128 GByte DDR5 via 4x SODIMMs, ECC and non-ECC
- 16x PCIe Gen 5.0 lanes (for high performance CPUs) + 8x PCIe Gen 4.0 lanes +
- 6x PCIe Gen 3.0 lanes
- 3x DDI + 1x eDP

2.3 COM-HPC® Documentation

The COM-HPC® specification defines the COM-HPC® module form factor, pinout and signals. For more COM-HPC® specification information, visit the [PCI Industrial Computer Manufacturers Group \(PICMG®\)](#) website.

2.4 COM-HPC® Client Functionality

All Kontron COM-HPC® Client modules contain two 400-pin connector, each of which has 4 rows called A to D on the primary connector and row E to H on the secondary connector. The COM-HPC® Client Computer-on-Module features the following maximum amount of interfaces according to the PICMG module pinout type.

Interface	Client	ALS with W(R)680(E)	ALS with Q670(E)	ALS with H610(E)
PCIe_REFCLK	2x	2x	2x	2x
PCIe_REFCLK_IN	2x	2x	2x	2x
PCIe	49x	20x/20x	20x/15x	20x/7x
NBASE-T	2x	2x w TSN	2x w TSN	2x w TSN
ETH_KR	2x 10/25Gb	-	-	-
ETH_KR_CEI	1x	-	-	-
USB 2.0	8x	8x	8x	8x
USB 3.2 Gen1 or Gen2	4x	4x	4x 4x	
USB 3.2 Gen2x2	2x	2x	2x	2x
USB 4.0	2x	-	-	-
USB C PD I ² C	1x	1x	1x	1x
USB 4 PRTCTL	1x	-	-	-
DDI	3x	3x	3x	3x
eDP/DSI	1x	1x	1x	1x
Soundwire/DMIC	1x	1x	1x	1x
I2S	1x	1x	1x	1x
SATA	2x	2x	2x	2x
eSPI	1x	1x	1x	1x
BOOT_SPI	1x	1x	1x	1x
GP_SPI	1x	1x	1x	1x
SMB	1x	1x	1x	1x
I ² C	2x	2x	2x	2x
UART	2x	2x	2x	2x
GPIO	12x	12x	12x	12x

Table 2: COM-HPC® Client and COMh-ccAS functionality

2.5 COM-HPC® Benefits

COM-HPC® defines a Computer-On-Module (COM), with all the components necessary for a bootable host computer, packaged as a highly integrated computer. All Kontron COM-HPC® modules are very compact and feature a standardized form factor and a standardized connector layout that carry a specified set of signals. Each COM module is based on the COM-HPC® specification. This standardization allows designers to create a single-system carrier board that can accept present and future COM-HPC® modules. The carrier board designer can optimize exactly how each of these functions implements physically. Designers can place connectors precisely where needed for the

application, on a carrier board optimally designed to fit a system's packaging. A single carrier board design can use a range of COM-HPC® modules with different sizes and pinouts. This flexibility differentiates products at various price and performance points and provides a built-in upgrade path when designing future-proof systems. The modularity of a COM-HPC® solution also ensures against obsolescence when computer technology evolves. A properly designed COM-HPC® carrier board can work with several successive generations of COM-HPC® modules. A COM-HPC® carrier board design has many advantages of a customized computer-board design and, additionally, delivers better obsolescence protection, heavily reduced engineering effort, and faster time to market.

3. Product specification

3.1 Module Variants



COMh-ccAS is always provided **without CPU**. The regarding CPU needs to be purchased separately.

3.1.1 Commercial Grade Modules (0°C to +60°C)

Part Number	Product Name	LAN	Use Case	Memory Sockets
HCC01-0000-80-0	COMh-ccAS W680	2x I226	PC Client	2
HCC01-0000-70-0	COMh-ccAS Q670	2x I226	PC Client	2
HCC01-0000-10-0	COMh-ccAS H610	2x I226	PC Client	2
HCC02-0000-8E-0	COMh-ccAS R680E	2x I226	Embedded	2
HCC02-0000-7E-0	COMh-ccAS Q670E	2x I226	Embedded	2
HCC02-0000-1E-0	COMh-ccAS H610E	2x I226	Embedded	2

Table 3: Product Number for Commercial Grade Modules (0°C to +60°C)

3.1.2 Extended temperature Grade Modules (E1, -25°C to 75°C)

Extended temperature grade modules (E1, -25°C to +75°C) are available as a standard product number, on request. Contact your local sales representative to find out more about available extended temperature variants.

3.1.3 Industrial Temperature Grade Modules (E2, -40°C to +85°C)

There are currently no Industrial Temperature Grade Modules available of COMh-ccAS.

3.2 Accessories

Accessories are product specific, COM-HPC® specific or general COMe accessories. For more information, contact your local Kontron Sales Representative or Kontron Inside Sales.

3.2.1 CPU

Following CPUs can be ordered from Kontron. As we deliver in trays, please be aware, that the amount of ordered CPUs is a multiple of the tray size.

Kontron PN	CPU Name	Description
HCC01-1290-i9-0	I9-12900 Alder Lake-S	I9-12900 Alder Lake -S LGA 1700 2.4GHz 8+8 65W PC Client
HCC01-1270-i7-0	I7-12700 Alder Lake-S	I7-12700 Alder Lake -S LGA 1700 2.1GHz 8+4 65W PC Client
HCC01-1260-i5-0	I5-12600 Alder Lake-S	I5-12600 Alder Lake -S LGA 1700 3.3GHz 6+0 65W PC Client
HCC01-1210-i3-0	I3-12100 Alder Lake-S	I3-12100 Alder Lake -S LGA 1700 3.3GHz 4+0 65W PC Client
HCC02-1290-i9-E	I9-12900E Alder Lake-S	I9-12900E Alder Lake -S LGA 1700 2.3GHz 8+8 65W Embedded
HCC02-1290-i9-T	I9-12900TE Alder Lake-S	I9-12900E Alder Lake -S LGA 1700 1.1GHz 8+8 35W Embedded Low Power
HCC02-1270-i7-E	I7-12700E Alder Lake-S	I7-12700E Alder Lake -S LGA 1700 2.1GHz 8+4 65W Embedded
HCC02-1270-i7-T	I7-12700TE Alder Lake-S	I7-12700TE Alder Lake -S LGA 1700 1.4GHz 8+4 35W Embedded Low Power
HCC02-1250-i5-E	I5-12500E Alder Lake-S	I5-12500E Alder Lake -S LGA 1700 2.9GHz 6+0 65W Embedded
HCC02-1250-i5-T	I5-12500TE Alder Lake-S	I5-12500TE Alder Lake -S LGA 1700 2.5GHz 6+0 35W Embedded Low Power
HCC02-1210-i3-E	I3-12100E Alder Lake-S	I3-12100E Alder Lake -S LGA 1700 3.2GHz 4+0 65W Embedded
HCC02-1210-i3-T	I3-12100TE Alder Lake-S	I3-12100TE Alder Lake -S LGA 1700 2.1GHz 6+0 35W Embedded Low Power
HCC02-G740-PG-E	G7400E Alder Lake-S	G7400E Alder Lake -S LGA 1700 3.6GHz 2+0 46W Embedded
HCC02-G740-PG-T	G7400TE Alder Lake-S	G7400TE Alder Lake -S LGA 1700 3.0GHz 2+0 35W Embedded Low Power
HCC02-G690-CE-E	G6900E Alder Lake-S	G6900E Alder Lake -S LGA 1700 3.0GHz 2+0 65W Embedded
HCC02-G690-CE-T	G6900TE Alder Lake-S	G6900TE Alder Lake -S LGA 1700 2.4GHz 2+0 25W Embedded Low Power

Table 4: 12th generation Intel® Core™ CPUs to be available from Kontron

Kontron PN	CPU Name	Description
HCC01-1390-i9-0	I9-13900 Raptor Lake-S	I9-13900 Raptor Lake-S LGA 1700 2GHz 8+16 65W PC Client
HCC01-1370-i7-0	I7-13700 Raptor Lake-S	I7-13700 Raptor Lake-S LGA 1700 2.1GHz 8+8 65W PC Client
HCC01-1350-i5-0	I5-13500 Raptor Lake-S	I5-13500 Raptor Lake-S LGA 1700 2.5GHz 6+8 65W PC Client
HCC01-1310-i3-0	I3-13100 Raptor Lake-S	I3-13100 Raptor Lake-S LGA 1700 3.4GHz 4+0 60W PC Client
HCC02-1390-i9-E	I9-13900E Raptor Lake-S	I9-13900E Raptor Lake-S LGA 1700 1.8GHz 8+16 65W Embedded
HCC02-1390-i9-T	I9-13900TE Raptor Lake-S	I9-13900TE Raptor Lake-S LGA 1700 1.0GHz 8+16 35W Embedded Low Power
HCC02-1370-i7-E	I7-13700E Raptor Lake-S	I7-13700E Raptor Lake-S LGA 1700 1.9GHz 8+8 65W Embedded
HCC02-1370-i7-T	I7-13700TE Raptor Lake-S	I7-13700TE Raptor Lake-S LGA 1700 1.1GHz 8+8 35W Embedded Low Power
HCC02-1350-i5-E	I5-13500E Raptor Lake-S	I5-13500E Raptor Lake-S LGA 1700 1.4GHz 6+8 65W Embedded
HCC02-1350-i5-T	I5-13500TE Raptor Lake-S	I5-13500TE Raptor Lake-S LGA 1700 1.3GHz 6+8 35W Embedded Low Power
HCC02-1310-i3-E	I3-13100E Raptor Lake-S	I3-13100E Raptor Lake-S LGA 1700 3.3GHz 4+0 60W Embedded
HCC02-1310-i3-T	I3-13100TE Raptor Lake-S	I3-13100TE Raptor Lake-S LGA 1700 2.4GHz 4+0 35W Embedded Low Power

Table 5: 13th generation Intel® Core™ CPUs will become available later.

3.2.2 Cooling

Any LGA 1700 cooler can be used for the CPU. In this case please use our X-Bracket for cooler mounting. Alternatively to the available CPU coolers our standard heat spreader can be used, which is available in a threaded and non-threaded (through hole) version. <table>

Kontron PN	Product Name	Description
------------	--------------	-------------

Kontron PN	Product Name	Description
HCC0A-0000-99-0	COMh-ccAS Heat Spreader threaded	Standard COM-HPC Heat Spreader for COMh-ccAS with threads
HCC0A-0000-99-1	COMh-ccAS Heat Spreader through hole	Standard COM-HPC Heat Spreader for COMh-ccAS through hole
HCC0A-0000-99-2	COMh-ccAS X-Bracket	X-Shape Bracket for Standard Motherboard Cooler
HCC0A-0000-99-3	COMh-ccAS PCH Cooler	PCH Cooler for COMh-ccAS
HCC0A-0000-99-4	COMh-ccAS Cooling Kit 65W	Motherboard CPU Cooler + X-Bracket + PCH Cooler
HCC0A-0000-99-5	COMh-ccAS cooler mounting jacket	Needs to be used instead of X-Bracket, when 4th memory module is in use

Table 5: Cooling Equipment for COMh-ccAS available from Kontron

3.2.3 Evaluation Carrier

Kontron PN	Product Name	Description
HCT01-0000-10-0	COM-HPC Client Carrier 10mm	COM-HPC Client Carrier with 10mm Connector Height

Table 6: Evaluation Carrier from Kontron

3.2.4 SO-DIMM Memory

Kontron provided ECC as well as NON-ECC memory modules, please take care, if your module (depending on the used chipset) supports ECC directly.

Kontron PN	Product Name	Size	ECC	Op. Temperature
97040-0848-CCAS	DDR5-4800 SODIMM 8GB_CCAS	8GB	noECC	0°C to +60°C
97040-1648-CCAS	DDR5-4800 SODIMM 16GB_CCAS	16GB	noECC	0°C to +60°C
97040-3248-CCAS	DDR5-4800 SODIMM 32GB_CCAS	32GB	noECC	0°C to +60°C
97050-0848-CCAS	DDR5-4800 SODIMM ECC_8GB_CCAS	8GB	ECC	0°C to +60°C
97050-1648-CCAS	DDR5-4800 SODIMM ECC_16GB_CCAS	16GB	ECC	0°C to +60°C
97050-3248-CCAS	DDR5-4800 SODIMM ECC_32GB_CCAS	32GB	ECC	0°C to +60°C

Table 7: Memory for COMh-ccAS available from Kontron

3.3 Functional Specification

3.3.1 Technical Data

Function	Definition
Compliance	COM HPC Client, Size C
Dimension (H X W)	160mm x 120 mm
Processors	Board comes without processors and supports Intel® 12 th generation Alderlake S Core® I processors
Chipset	Intel® PCH-S H610 Intel® PCH-S H610E Intel® PCH-S Q670 Intel® PCH-S Q670E Intel® PCH-S W680 Intel® PCH-S R680E
Main Memory	Up to 2x 32 GByte DDR5 SODIMM ECC or non ECC (total capacity 64 GByte) 3rd and 4th SODIMM socket on rear side (total capacity 128 GByte) (option)
Graphics Controller	depending from the plugged-in CPU: Up to Intel® UHD Graphics 770 driven by X ^e Architecture
Displays	DDI1: DP++ DDI2: DP++ DDI3: DP++ eDP
Ethernet Controller	2x Intel® I225LM alternatively 1x Intel® I225LM + 1x Intel® GPY215
Ethernet	Up to 2.5 Gb Ethernet with TSN support
Storage	2x SATA 6 Gb/s
Flash On-board	-
PCI Express	Up to 30 PCIe lanes (depending on used PCH)
PCI Express® for Graphics	with default configuration 1 x16, optional config. 2x8, 1x8 + 2x4
USB	up to 4x USB 3.2 (depending on used PCH) 8x USB 2.0
Serial	
Other Features	SPI, SMB, Fast I ² C, Staged Watchdog, RTC,
Special Features	Trusted Platform Module (TPM) 2.0
Features on Request	vPRO (AMT/TXT/AES Support) additional 3 rd and 4 th SO-DIMM socket
Power Management	ACPI 6.0
Power Supply	12 V ATX and/or Single Supply Power
BIOS	AMI Aptio V
Operating Systems	Windows®11, Linux
Temperature	Commercial temperature: 0 °C to +60 °C operating, -30 °C to +85 °C non-operating Optional E1: -25 °C to +75 °C operating, -30 °C to +85 °C non-operating E2: NA
Humidity	93 % relative Humidity at 40 °C, non-condensing (according to IEC 60068-2-78)

Table 8: Technical Data

3.3.2 Block Diagram

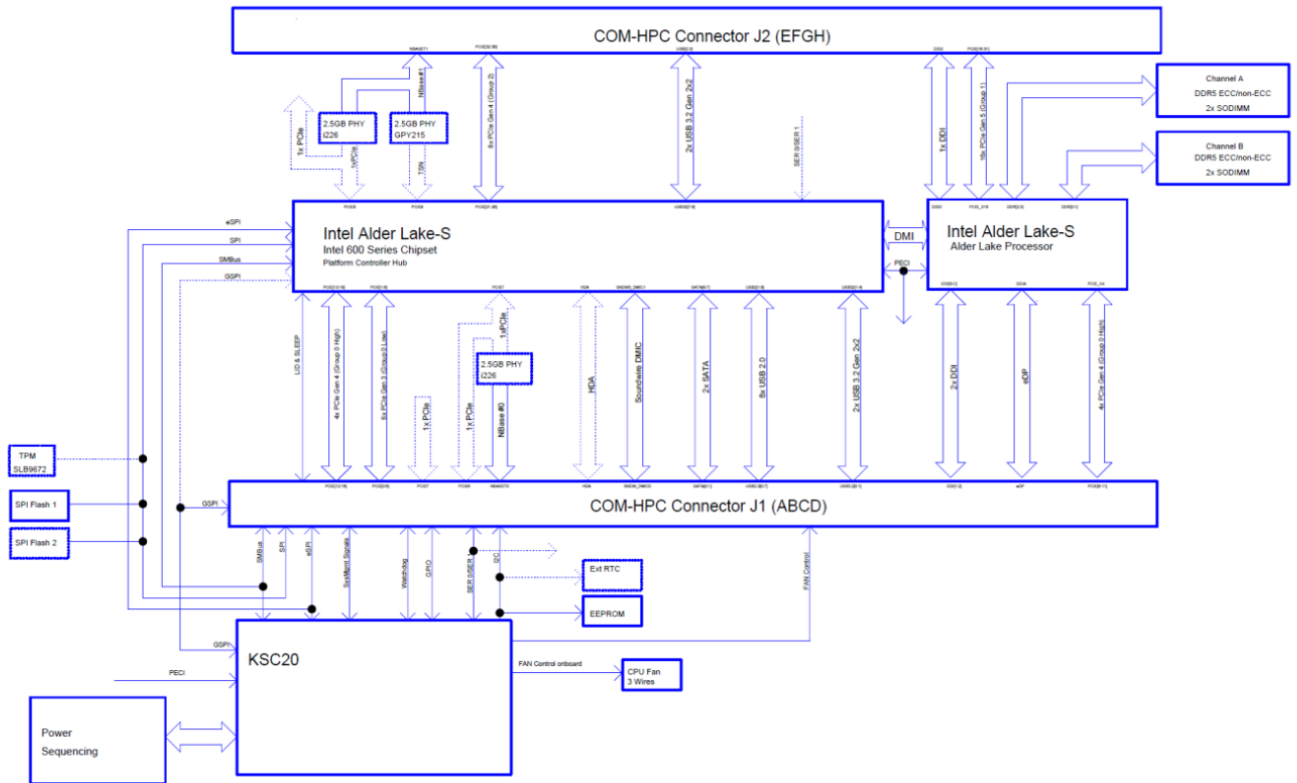


Figure 1: COMh-ccAS Blockdiagram

3.3.3 Front Side

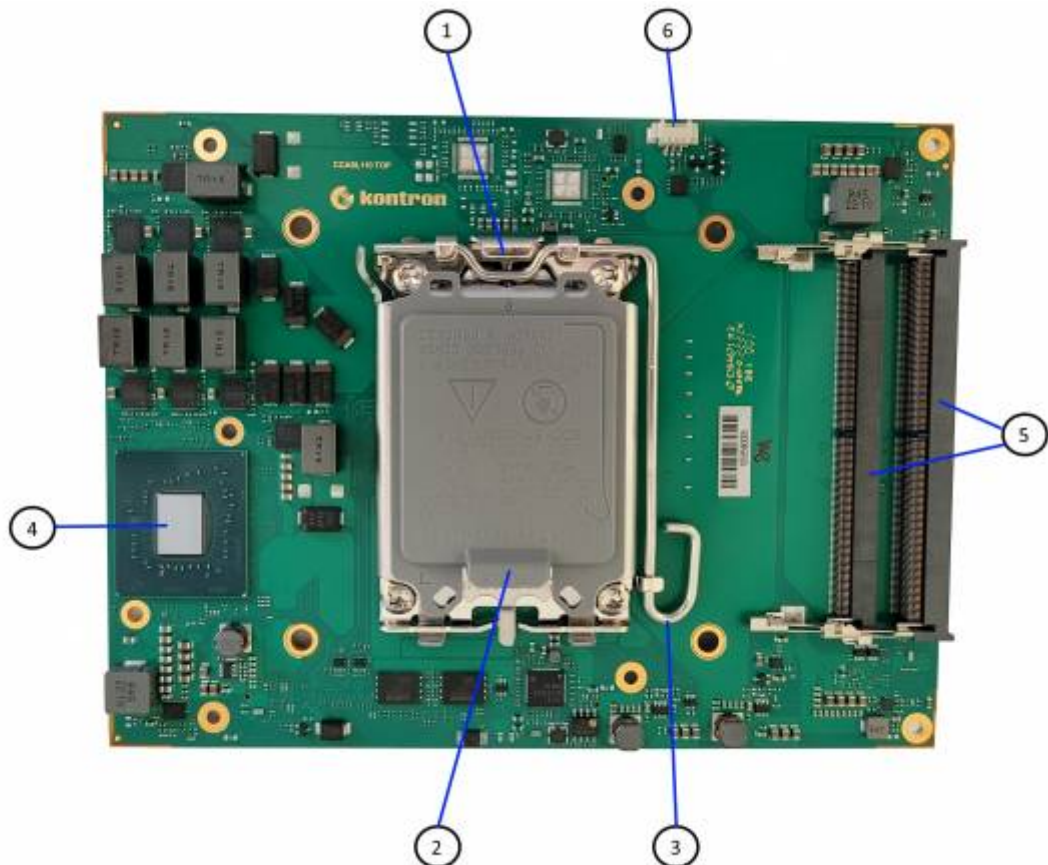


Figure 2: COMh-ccAS Front Side

1. CPU socket
2. Protective bracket (please remove when mounting the CPU)
3. Lever to unlock the CPU socket
4. Chipset (PCH)
5. 2x DDR5 SO-DIMM memory sockets
6. 3-pin fan connector

3.3.4 Back Side

**Figure 3:** COMh-ccAS Back Side

1. optional 2x DDR5 SO-DIMM modules (are not equipped in standard SKUs)
2. Programming connector for embedded controller
3. COM-HPC® Connector J1
4. COM-HPC® Connector J2

3.3.5 Processor (CPU)

12th Gen Intel® Core™ desktop processors for IoT applications with performance hybrid architecture¹, combining Performance-cores and Efficient-cores into a single die with Intel® Thread Director², enable IoT use cases with up to 1.36x times faster in single-thread performance³ and up to 1.35x times faster in multi-thread performance³ vs. 10th Gen Intel® Core™ Processors.

Topline Specifications are:

- Intel® 7 process technology
- New performance hybrid architecture¹ featuring Performance-cores and Efficient-cores
- Up to 16 cores, up to 24 threads in IoT SKUs
- Up to 30 MB Intel® Smart Cache
- Intel® UHD Graphics 770 driven by Xe Architecture with up to 32 EUs
- Support for up to four independent displays at up to 4K resolution or one display at 8K resolution
- Genlock video synchronization for Windows and Single Root I/O Virtualization (SRIOV)
- Graphics and display virtualization
- Intel® Deep Learning Boost (Intel® DL Boost) with VNNI instructions
- Up to DDR5 4800, up to DDR4 3200
- Up to 16 lanes PCIe 5.0 ready, up to four lanes PCIe 4.0 on the CPU
- Long-life availability
- Mainstream and IoT products available
- Real-Time capability in select SKUs
- Intel vPro® Platform eligible

CPU part number	CPU category	Processor cores (P+E) ⁸	Processor threads	Intel® Smart Cache (L3)	Processor Base Power (W)	Single P-Core turbo freq ⁹	Single E-Core turbo freq ⁹	GFX execution units	ECC	Intel vPro® Platform	Real Time	PCHs
12th Gen Intel® Core™ i9-12900E Processor	IoT	16 (8+8)	24	30MB	65W	Up to 5 GHz	Up to 3.8 GHz	32EU	Yes	Yes	Yes	Intel® R680E chipset & Intel® W680 chipset
									No	Yes	No	Intel® Q670E chipset & Intel® Q670 chipset
									No	No	No	Intel® H610 chipset & Intel® H610E chipset
12th Gen Intel® Core™ i9-12900TE Processor	IoT	16 (8+8)	24	30MB	35W	Up to 4.8 GHz	Up to 3.6 GHz	32EU	Yes	Yes	No	Intel® R680E chipset & Intel® W680 chipset
									No	Yes	No	Intel® Q670E chipset & Intel® Q670 chipset
									No	No	No	Intel® H610 chipset & Intel® H610E chipset
12th Gen Intel® Core™ i9-12900 Processor	Mainstream	16 (8+8)	24	30MB	65W	Up to 5 GHz	Up to 3.8 GHz	32EU	Yes	Yes	No	Intel® R680E chipset & Intel® W680 chipset
									No	Yes	No	Intel® Q670E chipset & Intel® Q670 chipset
									No	No	No	Intel® H610 chipset & Intel® H610E chipset

CPU part number	CPU category	Processor cores (P+E)8	Processor threads	Intel® Smart Cache (L3)	Processor Base Power (W)	Single P-Core turbo freq9	Single E-Core turbo freq9	GFX execution units	ECC	Intel vPro® Platform	Real Time	PCHs
12th Gen Intel® Core™ i7-12700E Processor	IoT	12 (8+4)	20	25MB	65W	Up to 4.8 GHz	Up to 3.6 GHz	32EU	Yes	Yes	Yes	Intel® R680E chipset & Intel® W680 chipset
									No	Yes	No	Intel® Q670E chipset & Intel® Q670 chipset
									No	No	No	Intel® H610 chipset & Intel® H610E chipset
12th Gen Intel® Core™ i7-12700TE Processor	IoT	12 (8+4)	20	25MB	35W	Up to 4.7 GHz	Up to 3.6 GHz	32EU	Yes	Yes	No	Intel® R680E chipset & Intel® W680 chipset
									No	Yes	No	Intel® Q670E chipset & Intel® Q670 chipset
									No	No	No	Intel® H610 chipset & Intel® H610E chipset
12th Gen Intel® Core™ i7-12700 Processor	Mainstream	12 (8+4)	20	25MB	65W	Up to 4.8 GHz	Up to 3.6 GHz	32EU	Yes	Yes	No	Intel® R680E chipset & Intel® W680 chipset
									No	Yes	No	Intel® Q670E chipset & Intel® Q670 chipset
									No	No	No	Intel® H610 chipset & Intel® H610E chipse
12th Gen Intel® Core™ i5-12500E Processor	IoT	6 (6+0)	12	18MB	65W	Up to 4.5 GHz	NA	32EU	Yes	Yes	Yes	Intel® R680E chipset & Intel® W680 chipset
									No	Yes	No	Intel® Q670E chipset & Intel® Q670 chipset
									No	No	No	Intel® H610E chipset & Intel® H610 chipset
12th Gen Intel® Core™ i5-12500TE Processor	IoT	6 (6+0)	12	18MB	35W	Up to 4.3 GHz	NA	32EU	Yes	Yes	No	Intel® R680E chipset & Intel® W680 chipset
									No	Yes	No	Intel® Q670E chipset & Intel® Q670 chipset
									No	No	No	Intel® H610E chipset & Intel® H610 chipset

CPU part number	CPU category	Processor cores (P+E)8	Processor threads	Intel® Smart Cache (L3)	Processor Base Power (W)	Single P-Core turbo freq9	Single E-Core turbo freq9	GFX execution units	ECC	Intel vPro® Platform	Real Time	PCHs
12th Gen Intel® Core™ i5-12500 Processor	Mainstream	6 (6+0)	12	18MB	65W	Up to 4.6 GHz	NA	32EU	Yes	Yes	No	Intel® R680E chipset & Intel® W680 chipset
									No	Yes	No	Intel® Q670E chipset & Intel® Q670 chipset
									No	No	No	Intel® H610E chipset & Intel® H610 chipset
12th Gen Intel® Core™ i5-12400 Processor	Mainstream	6 (6+0)	12	18MB	65W	Up to 4.4 GHz	NA	24EU	No	No	No	Intel® R680E chipset & Intel® W680 chipset
									No	No	No	Intel® Q670E chipset & Intel® Q670 chipset
									No	No	No	Intel® H610E chipset & Intel® H610 chipset
12th Gen Intel® Core™ i3-12100E Processor	IoT	4 (4+0)	8	12MB	60W	Up to 4.2 GHz	NA	24EU	Yes	No	Yes	Intel® R680E chipset & Intel® W680 chipset
									No	No	No	Intel® Q670E chipset & Intel® Q670 chipset
									No	No	No	Intel® H610E chipset & Intel® H610 chipset
12th Gen Intel® Core™ i3-12100TE Processor	IoT	4 (4+0)	8	12MB	35W	Up to 4.0 GHz	NA	24EU	Yes	No	No	Intel® R680E chipset & Intel® W680 chipset
									No	No	No	Intel® Q670E chipset & Intel® Q670 chipset
									No	No	No	Intel® H610E chipset & Intel® H610 chipset
12th Gen Intel® Core™ i3-12100 Processor	Mainstream	4 (4+0)	8	12MB	60W	Up to 4.3 GHz	NA	24EU	Yes	No	No	Intel® R680E chipset & Intel® W680 chipset
									No	No	No	Intel® Q670E chipset & Intel® Q670 chipset
									No	No	No	Intel® H610E chipset & Intel® H610 chipset
Intel® Pentium® Gold G7400E Processor	IoT	2 (2+0)	4	6MB	46W	NA	NA	16EU	No	Yes	No	Intel® R680E chipset
									No	No	No	Intel® Q670E chipset & Intel® Q670 chipset
									No	No	No	Intel® H610E chipset & Intel® H610 chipset

CPU part number	CPU category	Processor cores (P+E)8	Processor threads	Intel® Smart Cache (L3)	Processor Base Power (W)	Single P-Core turbo freq9	Single E-Core turbo freq9	GFX execution units	ECC	Intel vPro® Platform	Real Time	PCHs
Intel® Pentium® Gold G7400TE Processor	IoT	2 (2+0)	4	6MB	35W	NA	NA	16EU	No	Yes	No	Intel® R680E chipset
										No	No	Intel® Q670E chipset & Intel® Q670 chipset
										No	No	Intel® H610E chipset & Intel® H610 chipset
Intel® Celeron® G6900E Processor	IoT	2 (2+0)	2	4MB	46W	NA	NA	16EU	No	Yes	No	Intel® R680E chipset
										No	No	Intel® Q670E chipset & Intel® Q670 chipset
										No	No	Intel® H610E chipset & Intel® H610 chipset
Intel® Celeron® G6900TE Processor	IoT	2 (2+0)	2	4MB	35W	NA	NA	16EU	No	Yes	No	Intel® R680E chipset
										No	No	Intel® Q670E chipset & Intel® Q670 chipset
										No	No	Intel® H610E chipset & Intel® H610 chipset

Table 9: CPU Feature Overview

3.3.5 Platform Controller Hub (PCH)

The PCH provides extensive I/O support. Functions and capabilities include:

- ACPI Power Management Logic Support, Revision 5.0a
- PCI Express Base Specification Revision 4.0
- Integrated Serial ATA Host controller 3.2, supports data transfer rates of up to 6 Gb/s on all ports
- USB 3.2 Gen 2×2 (20 Gb/s)eXtensible Host Controller (xHCI)
- USB 3.2 Gen 2×1 (5 Gb/s) Dual Role (eXtensible Device Controller - xDCI) Capability
- Direct Media Interface (DMI)
- Serial Peripheral Interface (SPI)
- Enhanced Serial Peripheral Interface (eSPI)
- General Purpose Input Output (GPIO)
- Interrupt controller
- Timer functions
- System Management Bus (SMBus) Specification, Version 2.0
- Integrated Clock Controller (ICC)/Real Time Clock Controller (RTCC)
- Intel® High Definition Audio and Intel® Smart Sound Technology (Intel® SST) and DMIC.
- Intel® Serial I/O UART Host controllers
- Intel® Serial I/O I2C Host controllers
- Integrated 10/100/1000 Megabit Ethernet MAC
- Integrated Sensor Hub (ISH)

- Supports Intel® Rapid Storage Technology (Intel® RST)
- Supports Intel® Active Management Technology (Intel® AMT)
- Supports Intel® Virtualization Technology for Directed I/O (Intel® VT-d)
- Supports Intel® Trusted Execution Technology (Intel® TXT)
- JTAG Boundary Scan support
- Intel® Trace Hub (Intel® TH) and Direct Connect Interface (DCI) for debug
- Supports Intel® CSME
- Supports Integrated connectivity (CNVi)



Not all functions and capabilities may be available on all SKUs. The following table provides an overview of the PCH I/O capabilities.

Features	H610(E)	H670(E)	W680/R680E
DMI	x4	x8	x8
Maximum SATA 6 Gb/s Ports	4	8	8
Maximum PCIe Gen3 Lanes	8	12	16
Maximum PCIe Gen4 Lanes	0	12	12
Total USB 2.0 Ports	10	14	14
Maximum USB 3.2 Gen 1x1 (5 Gb/s)	2	8	10
Maximum USB 3.2 Gen 2x1 (10 Gb/s)	2	4	10
Maximum USB 3.2 Gen 2x2 (20 Gb/s)	0	2	4
Intel® Smart Sound Technology	YES	YES	YES
Intel® CSME Firmware	Intel® CSME 16 Consumer	Intel® CSME 16 Consumer	Intel® CSME 16 Corporate
Intel® Optane™ Memory Support	NO	YES	YES
Intel® Rapid Storage Technology 19.x 1	YES	YES	YES
PCIe RAID 0,1,5 Support	NO	YES	YES
SATA RAID 0, 1, 5, 10 Support	NO	YES	YES
eSPI Chip Select	2	2	4

Table 10: Platform Controller Hub Feature Overview

3.3.6 System Memory

The COMh-ccAS supports up to 4 x 64 GByte of SODIMM DDR4-4800 non-ECC/ECC memory. Two SO-DIMM sockets are on the top side always available. The other two SO-DIMM sockets are optionally on the bottom side.

Socket	SO-DIMM DDR5-4800
Memory Type	DDR5-4800 1.2V non-ECC/ECC
Channels	Dual-channel
Max Memory	Up to 128GByte (2x 64GByte) (standard SKUs) Up to 256GByte (4x 64GByte) (optional)
Memory Speed	4800 MTs (max)

Table 11: System Memory

The two SODIMM memory sockets are located on the top side of the module where socket one is 4 mm height and socket two is 8 mm high. Each socket may be populated with a DDR5 SODIMM module mounted horizontally. There is an option for two additional SODIMM memory sockets mounted horizontally on the bottom side of the module.

In this case the X-bracket for mounting the standard cooler can not be used and HCC0A-0000-99-5

cooler mounting jacket must be used instead.

In general, memory modules have a much lower longevity than embedded motherboards, and therefore the EOL of the memory modules may occur several times during the lifetime of the motherboard. Kontron guarantees to maintain memory modules by replacing EOL memory modules with another qualified similar module. As a minimum, it is recommended to use Kontron memory modules for prototype system(s) in order to prove the stability of the system and as a reference. For volume production, if required, test and qualify other types of RAM. In order to qualify RAM it is recommend to configure three systems running a RAM Stress Test program in a heat chamber at 60°C, for a minimum of 24 hours.

3.3.7 High-Speed Interface Overview

The different variants of the chipset populated on the COMh-ccAS offered High-Speed IOs and the following table will give an overview of it.

HSIO Lane#	USB 3.2	PCIe	GbE	SATA	Description
0	USB0_SS0	-	-	-	only Gen1 on H610(E)
1	USB0_SS1	-	-	-	only Gen1 on H610(E)
2	USB1_SS0	-	-	-	only Gen1 on H610(E)
3	USB1_SS1	-	-	-	only Gen1 on H610(E)
4	NA	-	-	-	-
5	NA	-	-	-	-
6	USB2_SS0	-	-	-	NA on H610(E)
7	USB2_SS1	-	-	-	NA on H610(E)
8	USB3_SS0	-	-	-	NA on H610(E)
9	USB3_SS1	-	-	-	NA on H610(E)
10	-	PCIe 0	-	-	PCIe Gen 3
11	-	PCIe 1	-	-	PCIe Gen 3
12	-	PCIe 2	-	-	PCIe Gen 3
13	-	PCIe 3	-	-	PCIe Gen 3
14	-	PCIe 4	-	-	PCIe Gen 3
15	-	PCIe 5	-	-	PCIe Gen 3
16	-	-	GbE0 via i226	-	optionally as PCIe 6 without GbE0
17	-	-	-	GbE1 via i226 or GPY215	R680E: GPY215 all others: i226 optional: PCIe 7
18	-	-	-	-	Not used, because only available on X680(E)
19	-	-	-	-	Not used, because only available on X680(E)
20	-	-	-	-	Not used, because only available on X680(E)
21	-	-	-	-	Not used, because only available on X680(E)
22	-	PCIe 12	-	-	not available on H610(E)
23	-	PCIe 13	-	-	not available on H610(E)
24	-	PCIe 14	-	-	not available on H610(E)
25	-	PCIe 15	-	-	not available on H610(E)
26	-	-	-	-	not used
27	-	-	-	-	not used
28	-	-	-	SATA 0	-
29	-	-	-	SATA 1	-
30	-	PCIe 32	-	-	NA on H610(E)
31	-	PCIe 33	-	-	NA on H610(E)
32	-	PCIe 34	-	-	NA on H610(E)
33	-	PCIe 35	-	-	NA on H610(E)
34	-	PCIe 36	-	-	NA on H610(E)
35	-	PCIe 37	-	-	NA on H610(E)
36	-	PCIe 38	-	-	NA on H610(E)

HSIO Lane#	USB 3.2	PCIe	GbE	SATA	Description
37	-	PCIe 39	-	-	NA on H610(E)

Table 12: HSIO Mapping

3.4 Interfaces

3.4.1 PCIe

COM-HPC allows for up to 49 PCIe lanes on the Client Module pin-out, and for up to 65 PCIe lanes on the Server Module. The PCIe lanes are divided into 5 Groups:

- Group 0 Low: PCIe lanes 0:7 and also an additional lane for BMC use
- Group 0 High: PCIe lanes 8:15
- Group 1: PCIe lanes 16:31
- Group 2: PCIe lanes 32:47
- Group 3: PCIe lanes 48:63 (Server Module only)

COMh Group	COMh Lane	CPU/PCH Lane	Lane Config			PCIe Gen	Comment	
0 LOW	0	PCH PCIE 1	1x	x1	x1	3		
	1	PCH PCIE 2	x1	x1	x1			
	2	PCH PCIE 3	x1	x1	x1			
	3	PCH PCIE 4	x1	x1	x1			
	4	PCH PCIE 5	x1	x2	x4			
	5	PCH PCIE 6	x1					
	6	PCH PCIE 7	x1	x2				Share with GbE0 (default)
	7	PCH PCIE 8	x1					Share with GbE1 (default)
0 HIGH	8	CPU PCIE x4 0	x4			4		
	9	CPU PCIE x4 1						
	10	CPU PCIE x4 2						
	11	CPU PCIE x4 3						
	12	PCH PCIE 13	x4			4		
	13	PCH PCIE 14						
	14	PCH PCIE 15						
	15	PCH PCIE 16						
1	16	CPU PCIE x16 0	x8				5	
	17	CPU PCIE x16 1						
	18	CPU PCIE x16 2						
	19	CPU PCIE x16 3						
	20	CPU PCIE x16 4						
	21	CPU PCIE x16 5						
	22	CPU PCIE x16 6						
	23	CPU PCIE x16 7						
	24	CPU PCIE x16 8	x16					
	25	CPU PCIE x16 9						
	26	CPU PCIE x16 10						
	27	CPU PCIE x16 11						
	28	CPU PCIE x16 12				x8		
	29	CPU PCIE x16 13						
	30	CPU PCIE x16 14						
	31	CPU PCIE x16 15						

COMh Group	COMh Lane	CPU/PCH Lane	Lane Config		PCIe Gen	Comment
2	32	PCH PCIE 21	x4	-	-	Not available on H610(E)
	33	PCH PCIE 22				Not available on H610(E)
	34	PCH PCIE 21				
	35	PCH PCIE 21				
	36	PCH PCIE 21	x4	-	-	
	37	PCH PCIE 21				
	38	PCH PCIE 21				
	39	PCH PCIE 21				
40~47	NC	-		-		

Table 13: PCI Express lanes on COMh-ccAS

3.4.2 USB

The COM-HPC Client Module supports up to eight USB 2.0 ports and up to four USB 3.2 Gen 2x2 or USB4 ports. A COM-HPC USB 3.2 Gen 2x2 port may alternatively be used as a USB 3.2 Gen 1 or Gen 2 port as well.

The COM-HPC Server Module supports up to eight USB 2.0 ports, up to two USB 3.2 Gen 1 or Gen 2 ports and up to two USB 3.2 Gen 2x2 ports or USB4 ports. A USB 3.2 Gen 2x2 may be used as a USB 3.2 Gen 1 or Gen 2 port as well.

To realize a COM-HPC USB 3.2 Gen 1, Gen 2, Gen 2x2 or USB4 port, one of the four available USB 2.0 ports from the USB[0:3] pool must be used along with the SuperSpeed pins.

COMh-ccAS support up to 8x USB 2.0 and 4x USB 3.2 Gen 2x2.

COM-HPC connector	HSIO Lane#	USB Speed	Description
USB0	0;1	USB 3.1 Gen2x2	H610 allows only Gen1x1 connection
USB1	2;3	USB 3.1 Gen2x2	H610 allows only Gen1x1 connection
USB2	6;7	USB 3.1 Gen2x2	USB_SS not available on H610
USB3	8;9	USB 3.1 Gen2x2	USB_SS not available on H610
USB4	-	USB 2.0	USB 2.0
USB5	-	USB 2.0	USB 2.0
USB6	-	USB 2.0	USB 2.0
USB7	-	USB 2.0	USB 2.0

Table 14: USB 3.x support and HSIO

3.4.3 SATA

Two SATA links for support of SATA-150 (revision 1.0, 1.5Gb/s), SATA-300 (revision 2.0, 3Gb/s), and SATA-600 (revision 3.0, 6Gb/s) devices are defined, for the Client Module and the Server Module.

COMh-ccAS supports following SATA Interfaces:

COM-HPC Connector	HSIO Lane #	Description
SATA0	28	SATA Gen 3, 6 Gb/s
SATA1	29	SATA Gen 3, 6 Gb/s

Table 15: SATA Port Connections

3.4.4 Ethernet

Up to two NBASE-T Ethernet ports (max. 10G), designated NBASET0 and NBASET1, are supported on a COM-HPC Client module.

For a COM-HPC Server module one NBASE-T Ethernet port is defined.

Additionally up to two Ethernet KR high speed interfaces (max.25G) may be available on a COM-HPC Client module or up to eight on a COM-HPC Server module. For the Ethernet KR ports the Ethernet MACs are located on the COM-HPC Module. PHYs (if used) are on the Carrier.

The COMh-ccAS supports up to 2 2.5GB NBASE-T ports and NO KR interfaces. GbE0 is connected on HSIO 16. GbE1 is connected on HSIO 17.

3.4.5 Graphics Interfaces

COM-HPC Client boards support following graphic interfaces:

Interface	Description
eDP	embedded DisplayPort
DP0	DisplayPort 0
DP1	DisplayPort 1
DP2	DisplayPort 2

Table 16: COM-HPC defined display interfaces



If more than one active display port is connected, then the processor frequency may be lower than base frequency in thermally limited scenarios.

COMh-ccAS supports the full amount of interfaces. The DP ports are DP++ and can therefore used as HDMI (2.0b) when equipped with a passive adapter.

Item	Display
Displays	4 Display Pipes
Resolution	8K60 or 5K60 HDR
Concurrent	5K60 HDR or 4K60 HDR
eDP	eDP 1.4b HBR3 w/ VDSC1.1\5K120 HDR internal panel
HDMI	Native HDMI 2.0b 10b formatsHDMI 2.1 via DP to HDMI protocol convertor
DP	DP 1.4a HBR3 w/ VDSC1.1 8k60 HDR external display
Variable Refresh	DP or eDP Adaptive Sync
HDR Support	Improved HDR tone mapping (Dynamic Metadata)
New Frame Buffer Formats	FP16, 420/422/444, 10b/12b/16b
Scaler	5K 7x7 Adaptive Linear Scalers

Table 17: Display Interfaces on COMh-ccAS



Please check in detail the graphic engine of your used CPU, as the CPU is responsible for the graphic capabilities.

3.4.6 Audio Interfaces

COM-HPC Client boards can support following audio interfaces:

- Soundwire
- HD Audio

COMh-ccAS use HDAudio Interface to connect to COMh Connectors. Additionally audio signals are routed to the DP ports. Therefore an extra audio interface is not necessary, if there is audio output only necessary at the displays.

HDA signals will passed through levelshifter TXB0108.

COMh	PCH Pin (default)	Description
I2S_CLK/SNDW_CLK2/HDA_B CLK	GPP_R0/HDA_BCLK/HDACPU_BCLK	24.0 MHz clock to external codec
I2S_DIN/SNDW_DAT2/HDA_SDI	GPP_R3/HDA_SDI0/HDACPU_SDI	HD Audio Serial Data Input from Codec
I2S_DOUT/SNDW_DAT3/HDA_SDO	GPP_R2/HDA_SDO/HDACPU_SDO	HD Audio Serial Data output to Codec
I2S_LRCLK/SNDW_CLK3/HDA_SYNC	GPP_R1/HDA_SYNC	HD Audio sync signal to codec
I2S_MCLK/HDA_RST#	GPP_R4/HDA_RST#	HD Audio link Reset

Table 18: HDA Interface on COMh-ccAS

3.4.7 UART

Two 3.3V logic level asynchronous serial ports, designated UART0 and UART1 are defined by COM-HPC. Each port has TX and RX signals for data use and RTS# and CTS# signals for optional handshake / flow control use. For logic level use, the TX and RX signals are active high and the RTS# and CTS# signals are active low. Some data sheets omit the trailing '#' signal but the logic level handshake signals are active low nonetheless. The idle state, or 'mark' state, of the logic level TX line is high, or 3.3V in the COM-HPC case.

These ports may be used directly as logic level asynchronous serial connections between COM-HPC Module and Carrier based devices, or between COM-HPC Module and Carrier based mezzanine devices such as certain Mini-PCIe or M.2 cards. Care has to be taken that the logic I/O levels match up.

The UART interface on COMh-ccAS is via default driven bei the embedded controller. It can be reconnected on a custom version to the PCH's UART.

COMh	EC (Default)	PCH (Optional)
UART0_TX	UART0_TX	GPP_C9/UART0_TXD
UART0_RX	UART0_RX	GPP_C8/UART0_RXD
UART0_RTS#	UART0_RTS#	GPP_C10/UART0_RTS#
UART0_CTS#	UART0_CTS#	GPP_C11/UART0_CTS#
UART1_TX	UART1_TX	GPP_C21/UART2_TXD
UART1_RX	UART1_RX	GPP_C20/UART2_RXD
UART1_RTS#	UART1_RTS#	GPP_C22/UART2_RTS#
UART1_CTS#	UART1_CTS#	GPP_C23/UART2_CTS#

Table 19: UART interface on COMh-ccAS

3.4.8 General Purpose SPI interface

COM-HPC Client and Server modules can support a General Purpose SPI interface (GP_SPI) to connect multiple peripherals.

The COMh GP_SPI interface on COMh-ccAS is handle by the embedded controller. There is an option to handle it by PCH as well.

EC	PCH (Optional)	COMh
EC_GP_SPI_CLK	PCH_GP_SPI_CLK	GP_SPI_CLK
EC_GP_SPI_MOSI	PCH_GP_SPI_MOSI	GP_SPI_MOSI
EC_GP_SPI_MISO	PCH_GP_SPI_MISO	GP_SPI_MISO
EC_GP_SPI_CS0#	PCH_GP_SPI_CS0#	GP_SPI_CS0#
EC_GP_SPI_CS1#	PCH_GP_SPI_CS1#	GP_SPI_CS1#
EC_GP_SPI_CS2#	-	GP_SPI_CS2#
EC_GP_SPI_CS3#	-	GP_SPI_CS3#
EC_GP_SPI_ALERT#	-	GP_SPI_ALERT#

Table 20: GP-SPI on COMh-ccAS

3.4.9 Boot SPI

The Boot SPI interface is used to support loading all or parts of the system BIOS from a Module or Carrier based SPI (Serial Peripheral Interface) or SQI (Serial Quad Interface) flash device. The SPI or SQI flash device can be up to 64 MB (512 Mb). Two flash devices may be used on the Module, allowing up to 128 MB of boot code storage on the Module. Alternatively there may be a flash device on the Carrier and / or on the Module, for a combined total of up to 128 MB. In most situations, only one flash device, either on the Module or on the Carrier, is used.

Alder Lake SPI0 is routed to COMh connector. This interfaces supports serial flash (for BIOS firmware) and TPM being attached to it only.

COMh	Signal PCH Pin	Description
BOOT_SPI_CS#	SPI0_CS0#	Chip select for Carrier Board SPI
BOOT_SPI_IO0	SPI0_MOSI	Bidirectional data path for Carrier SPI flash
BOOT_SPI_IO1	SPI0_MISO	Bidirectional data path for Carrier SPI flash
BOOT_SPI_IO2	SPI0_IO2	Bidirectional data path for Carrier SPI flash
BOOT_SPI_IO3	SPI0_IO3	Bidirectional data path for Carrier SPI flash
BOOT_SPI_CLK	SPI0_CLK	Clock from Module chipset to Carrier SPI
VCC_BOOT_SPI	-	connected to V_3V3_S5
BSEL0	-	Boot select pins. These pins distinguish between a SPI or eSPI BIOS boot and between an on-Module or off-Module BIOS. Passed through KSC
BSEL1	-	
BSEL2	-	

Table 21: Boot SPI interface on COMh-ccAS

COMh-ccAS supports on-module and external carrier boot from SPI. COMh signals BSEL[1:3] can be used to select the desired boot source (see table below)

BSEL	eSPI_CS1#	eSPI_CS0#	SPI_CS1#	SPI_CS0#	Boot option	Description
0 1 2						
1 1 1	Carrier	Module	Module	Module	MAFS	BIOS on SPI0 or SPI1 on Module

BSEL			eSPI_CS1#	eSPI_CS0#	SPI_CS1#	SPI_CS0#	Boot option	Description
0	1	2						
1	1	0	Carrier	Module	Module	Carrier	MAFS	BIOS on SPI0 on Carrier or on SPI1 on Module
1	0	1	Carrier	Module	Carrier	Module	MAFS	BIOS on SPI0 on Module or on SPI1 on Carrier
1	0	0	-	-	-	-	-	Not used
0	1	1	Module	Carrier	Module	Module	MAFS	BIOS on SPI0 or SPI1 on Module
0	1	0	Module	Carrier	Module	Module	SAFS	BIOS on Carrier SAFS
0	0	1	Module	Carrier	Module	Module	SAFS	BIOS on Carrier SAFS
0	0	0	-	-	-	-	-	Not used

Table 22: BIOS Boot options on COMh-ccAS

Following Flash Devices are supported by the BIOS:

- W25Q256JVEIQ
- S25FL256LAGNFI010
- MX25L25645GZ2I
- MT25QL256ABA1EW9-0SIT

3.4.10 eSPI

COM-HPC supports an eSPI port for general purpose I/O. The eSPI interface (like LPC before it) can be useful for general purpose devices such as Carrier Super I/O devices, Carrier CPLDs or FPGAs, hardware monitoring devices, and others. It is also possible to boot the BIOS over eSPI. The eSPI bus runs from a 1.8V supply. COM-HPC does not support LPC.

3.4.11 I2C

The internal I2C bus transfers data between components on the same module and the external I2C bus transfers data between I2C devices connected on the bus. The Fast I2C bus transfers data with rates up to 400 kHz. To change the I2C bus speed, in the BIOS setup menu select:

Advanced>Miscellaneous>I2C Speed> 400 kHz to 1 kHz

The default speed is 200 kHz.

3.4.12 GPIO

The COMh-ccAS offers 12 GPIO pins on the dedicated pins of COM-HPC®. The type of termination resistor used sets the direction of the GPIO; where GPI terminations are pull-up resistors, and GPO terminations are pull-down resistors.

Due to the fact that both the pull-up and pull-down termination resistors are weak, it is possible to override the termination resistors using external pull-ups, pull-downs or I/Os. Overriding the termination resistors means that the 12 GPIO pins can be considered as bi-directional since there are no restrictions whether you use the available GPIO pins in the in-direction or out-direction.

3.4.13 SMB

The System Management Bus (SMB) is a simple 2-wire bus for low-speed system management communication. The PCH or the SOC controls the SMB. The module's SMB connects typically to the memory and the hardware controller.

3.5 Features

3.5.1 ACPI Power States

ACPI enables the system to power down, save power when not required (suspend) and wake up when required (resume).

ACPI controls the power states S0-S5, where S0 has the highest priority and S5 the lowest priority.

S0	Working state
S1	Sleep (typically not supported anymore)
S2	Deep Sleep (typically not supported anymore)
S3	Suspend-to-RAM
S4	Suspend-to-disk / Hibernate
S5	Soft-off state

Table 23: ACPI Power States Function



Not all ACPI defined power states are available.
The COMh-ccAS supports ACPI 6.0 and the power states S0, S3, S4, S5 only.
Systems that support the low-power idle state do not use power states S3 and S4.

To power on from states S3, S4 and S5 use

- Power Button
- WakeOnLAN (S3, S4)



The OS must support wake up from an USB device and the carrier board must power the USB port with the standby voltage.

3.5.2 Embedded Controller - Hardware Monitor

The embedded controller (EC) provides a broad set of functionality:

- monitoring the module's processor temperature, power supply voltages (VCC /5 VSB), battery voltage V_BAT
- monitoring and configuring the on-board and external fans
- acting as hub or super-I/O for low speed interfaces such as UART, I2C/SMB, GSPI, GPIO
- supporting watchdog functions

The EC is accessible through the API in the Board Support Package.

3.5.3 TPM

Trusted Platform Module is a BOM Option with the Infineon SLB9672 connected to SPI.

3.5.4 Watchdog

The watchdog timer interrupt (WD_OUT) is a hardware or software timer implemented by the module to the carrier board if there is a fault condition in the main program; the watchdog triggers a system reset or other corrective actions after a specific time, with the aim to bring the system back from a non-responsive to normal state.

The COMh-ccAS supports an independently programmable watchdog that works with two stages that can be used stage by stage.

No action	Stage is off and will be skipped
Reset	Restarts the module and starts a new POST and operating system
Delay → No action	Might be necessary when an operating system must be started and the time for the first trigger pulse must be extended. Only available in the first stage!
WD_OUT only	Triggers WD_OUT pin on the carrier board connector only
Reset + WD_OUT	
Delay + WD_OUT → No action	

Table 24: Dual Staged Watchdog Timer - Time-Out Events

Watchdog Time-out

The COMh-ccAS has 2 signals interfering with the watchdog.

WD_STROBE# is an input to trigger the watchdog timer. Periodic strobing prevents the watchdog, if enabled, from timing out.

WD_OUT is an output indicating that a watchdog time-out event has occurred, when the setting activates this signal.

COM-HPC	EC	Description
WD_OUT	GPIO036	Passed through Embedded Controller. Output indicating that a watchdog time-out event has occurred.
WD_STROBE#	GPIO035	Passed through Embedded Controller. Strobe input to watchdog timer.

Table 25: Watchdog signal on COM-HPC connector

3.5.5 Real-Time Clock (RTC)

The RTC keeps track of the current time accurately. The RTC's low power consumption enables the RTC to continue operation and keep time using a lower secondary source of power while the primary source of power is switched off or unavailable.

The COMh-ccAS supports typical RTC values of 3 V and less than 10 μ A. When powered by the main power supply on-module regulators generate the RTC voltage, to reduce RTC current draw. The RTC's battery voltage range is 2.8 V to 3.47 V.



It is not recommended to run a system without a RTC battery on the carrier board. Even if the RTC battery is not required to keep the actual time and date when main power is off, a missing RTC battery will cause other side effects such as longer boot times. Intel processor environments are generally designed to rely on RTC battery voltage.

3.5.6 NVME

On some COM-HPC modules a PCIe NVMe NAND Flash SSD (with a capacity up to 1TB) can be populated optionally.

The COMh-ccAS doesn't support NVME.

3.5.7 Features on Request

- 3rd and 4th SO-DIMM Connector (only available on Standard Modules with 680 chipset)
- 2nd SPI BIOS flash on-module for failover (not implemented on Standard Modules)
- It is possible to alternate one GBLAN Interface to GPY215, instead of the used i226 for better TSN support, but there is no driver support in Windows for this configuration available.

3.6 Electrical Specification

The module powers on by connecting to a carrier board via the COM-HPC interface connectors. The COM-HPC interface connector pins on the module limit the amount of power received.



Before connecting the module's interface connector to the carrier board's corresponding connector, ensure that the carrier board is switched off and disconnected from the main power supply. Failure to disconnect the main power supply could result in personal injury and damage to the module and/or carrier board.



Observe that only trained personnel aware of the associated dangers connect the module, within an access controlled ESD-safe workplace

3.6.1 Power Supply Specification

The power specification of the module supports a supply voltage of 12 V. Other supported voltages are 5 V standby and 3.3 V RTC battery input

Supply Voltage (VCC)	12 V \pm 5%
Standby Voltage (VCC_5V_SBY)	5 V \pm 5% - Note: Standby voltage is not mandatory for operation
RTC Voltage (VCC_RTC)	2.8 V to 3.47 V

Table 26: Electrical Specification



Only connect to an external power supply delivering the specified input rating and complying with the requirements of Safety Extra Low Voltage (SELV) and Limited Power Source (LPS) of UL/IEC 60950-1 or (PS2) of UL/IEC 62368-1.



To protect external power lines of peripheral devices, make sure that the wires have the right diameter to withstand the maximum available current and the enclosure of the peripheral device fulfils the fire-protection requirements of IEC/EN 62368-1.



If any of the supply voltages drops below the allowed operating level longer than the specified hold-up time, all the supply voltages should be shut down and left OFF for a time long enough to allow the internal board voltages to discharge sufficiently. If the OFF time is not observed, parts of the board or attached peripherals may work



incorrectly or even suffer a reduction of MTBF. The minimum OFF time depends on the implemented PSU model and other electrical factors and must be measured individually for each case.

Power Supply Voltage Rise Time

The input voltage rise time is 0.1 ms to 20 ms from input voltage $\leq 10\%$ to nominal input voltage. To comply with the ATX specification there must be a smooth and continuous ramp of each DC input voltage from 10 % to 90 % of the DC input voltage final set point.

Power Supply Voltage Ripple

The maximum power supply voltage ripple and noise is 100 mV peak-to-peak measured over a frequency bandwidth of 0 MHz to 20 MHz. The voltage ripple, must not cause the input voltage range to be exceeded.

Power Supply Inrush Current

The maximum inrush current at 5 V standby is 2 A. From states G3 (module is mechanically completely off, with no power consumption) or S5 (module appears to be completely off) to state S0 (module is fully usable) the maximum inrush current meets the SFX Design Guide.

3.6.2 Power Management

The Advanced Configuration and Power Interface (ACPI) 6.0 hardware specification supports features such as power button and suspend states. The power management options are available within the BIOS set up menu: **Advanced>ACPI Settings>**

Suspend States

If power is removed, 5V can be applied to the V_5V_SBY pins to support the ACPI suspend-states:

- Suspend to RAM (S3)
- Suspend to Disk (S4)
- Soft-off (S5)



If power is removed, the wake-up event (S0) requires 12V VCC to power on the module for normal operation.

Power Supply Control Signals

Power supply control settings are set in the BIOS and enable the module to shut down, reset and wake from standby.

COM-HPC Signal	Pin	Description
Power Button (PWRBTN#)	B02	A PWRBTN# falling edge signal creates power button event (50 ms ≤ t < 4 s, typical 400 ms) at low level). Power button events can be used to bring a system out of S5 soft-off and other suspend states, as well as powering the system down. Pressing the power button for at least four seconds turns off power to the module Power Button Override.
Power Good (VIN_PWR_OK)	C06	Indicates that all power supplies to the module are stable within specified ranges. PWR_OK signal goes active and module internal power supplies are enabled. PWR_OK can be driven low to prevent module from powering up until the carrier is ready and releases the signal. PWR_OK should not be deactivated after the module enters S0 unless there is a power fail condition.
Reset Button (RSTBTN#)	C02	Reset button input. The RSTBTN# may be level sensitive (active low) or may be triggered by the falling edge of the signal. There are some situations in which it is desirable for a sustained low state of the RSTBTN# to keep the CPU Module unit in a reset condition. This situation comes up with large Carrier or module based FPGAs that need more time to be loaded and configured than the CPU boot time allows. Therefore, COM-HPC Module designs should either keep the CPU Module in a reset state while RSTBTN# is low, or they should pause the boot process in an early state while RSTBTN# is low. This can be done by the Module BIOS monitoring the RSTBTN# line through an I/O port. The BIOS should be paused in an early point, before PCIe and USB enumerations take place. Additionally, the Module PLTRST# signal (below) should not be released (driven or pulled high) while the RSTBTN# is low. For situations when RSTBTN# is not able to reestablish control of the system, VIN_PWR_OK or a power cycle may be used.
Platform Reset (PLTRST#)	A12	Platform Reset: output from Module to Carrier Board. Active low. Issued by Module chipset and may result from a low RSTBTN# input, a low VIN_PWR_OK input, a VCC power input that falls below the minimum specification, a watchdog timeout, or may be initiated by the Module software. PLTRST# should remain asserted (low) while the RSTBTN# is low.
Suspend to RAM (SUS_S3#)	B08	Indicates system is in Suspend to RAM state. Active low output. An inverted copy of SUS_S3# on the Carrier Board should be used to enable the non-standby power on a typical ATX supply. Even in single input supply system implementations (AT mode, no standby input), the SUS_S3# Module output should be used to disable any Carrier voltage regulators when SUS_S3# is low, to prevent bleed leakage from Carrier circuits into the Module.
Suspend to Disk (SUS_S4_S5#)	C08	Indicates system is in Suspend to Disk (S4) or Soft Off (S5) state. Active low output.
Suspend Clock (SUS_CLK)	A87	32.768 kHz +/- 100 ppm clock used by Carrier peripherals such as M.2 cards in their low power modes.
PCIe Wake UP (WAKE0#)	D10	PCI Express wake up signal.
GP Wake UP (WAKE1#)	D11	General purpose wake up signal. May be used to implement wake-up on PS2 keyboard or mouse activity.
Battery Low (BATLOW#)	A11	Indicates that external battery is low. This port provides a battery-low signal to the Module for orderly transitioning to power saving or power cut-off ACPI modes.
Lid detection (LID#)	B45	LID switch. COM-HPC/Client only: Low active signal used by the ACPI operating system for a LID switch.
Sleep button (SLEEP#)	B46	Sleep button. COM-HPC/Client only: Low active signal used by the ACPI operating system to bring the system to sleep state or to wake it up again.
Tamper Signal (TAMPER#)	B06	Tamper or Intrusion detection line on VCC_RTC power well. Carrier hardware pulls this low on a Tamper event.
No power (AC_PRESENT)	D34	Driven hard low on Carrier if system AC power is not present.
Resume Reset (RSMRST_OUT#)	B86	This is a buffered copy of the internal Module RSMRST# (Resume Reset, active low) signal. The internal Module RSMRST# signal is an input to the chipset or SOC and when it transitions from low to high it indicates that the suspend well power rails are stable. USB devices on the Carrier that are to be active in S5 / S3 / S0 should not have their 5V supply applied before RSMRST_OUT# goes high. RSMRST_OUT# shall be a 3.3V CMOS Module output, active in all power states.

Table 27: Power Supply Control Signals

3.7 Thermal Management

3.7.1 Heatspreader Plate Assembly

A heatspreader plate assembly is available from Kontron for the COMh-ccAS. The heatspreader plate assembly is NOT a heat sink. The heatspreader plate transfers heat as quickly as possible from the processor using a copper core positioned directly above the processor and a Thermal Interface Material (TIM). The heatspreader plate is factory prepared with a TIM screen printed on the contacts and may be fasten to the module without additional user actions.

The heatspreader plate works as a COM-HPC standard thermal interface and must be used with a heat sink or external cooling devices to maintain the heatspreader plate at proper operating temperatures. Under worst-case conditions, the cooling mechanism must maintain an ambient air and heatspreader plate temperature on any spot of the heatspreader's surface according the module's specification:

- 60°C for commercial temperature grade modules
- 75°C for extended temperature grade modules (E1)
- 85°C for industrial temperature grade modules (E2)

3.7.2 Active/Passive Cooling Solutions

Both active and passive thermal management approaches can be used with the heatspreader plate. The optimum cooling solution depends on the application and environmental conditions. Kontron's active or passive cooling solutions are designed to cover the power and thermal dissipation for a commercial temperature range used in housing with a suitable airflow.

3.7.3 Operating with Kontron Heatspreader Plate (HSP) Assembly

The operating temperature requirements are:

- Maximum ambient temperature with ambient being the air surrounding the module
- Maximum measurable temperature on any part on the heatspreader's surface

Temperature Grade	Requirements
Commercial Grade	at 60°C HSP temperature on MCP @100% load; needs to run at nominal frequency
Extended Grade(E1)	at 75°C HSP temperature the MCP @ 75% load; is allowed to start throttling for thermal protection
Industrial Grade (E2)	at 85°C HSP temperature the MCP @ 50% load; is allowed to start throttling for thermal protection

Table 28: Heatspreader Temperature Specification

3.7.4 Operating without Kontron Heatspreader Plate (HSP) Assembly

The operating temperature is the maximum measurable temperature on any spot of the module's surface.

3.7.5 Temperature Sensors

The module's processor is capable of reading its internal temperature. The on-module Hardware Monitor (HWM), located in the board management controller KSC20, uses an on-chip temperature sensor to measure the module's temperature on the board.



Figure 4: Module Temperature Sensor

1. Temperature Sensor in Board Management Controller

3.7.6 On-Module Fan Connector

The module's fan connector powers, controls and monitors an external fan. To connect a standard 3-pin connector fan to the module, use Kontron's fan cable, KAB-HSP 200 mm (96079-0000-00-0).

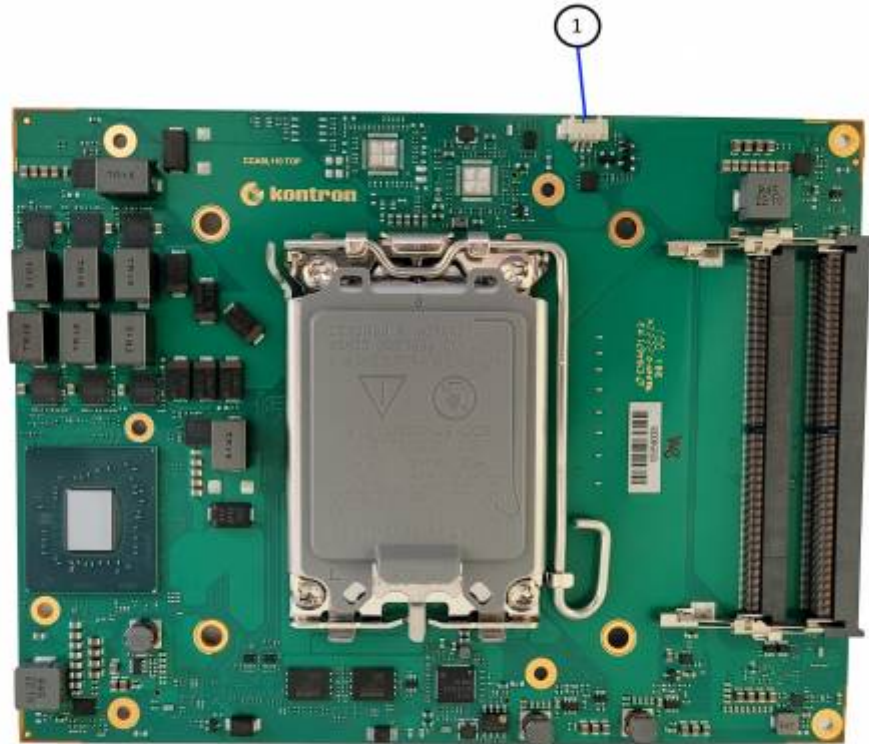


Figure 5: On-module fan connector

Pin	Signal	Description	Type
1	Fan_Tach_IN#	Fan input voltage from COMe connector	Input
2	V_FAN	12 V \pm 10% (max.) across module input range	PWR
3	GND	Power GND	PWR

Table 29: Fan Connector (3-Pin) Pin Assignment



Always check the fan specification according to the limitations of the supply current and supply voltage.

3.8 Mechanical Specification

The COMh-ccAS is compatible with the COM-HPC® mechanical specification.

3.8.1 Module Dimensions

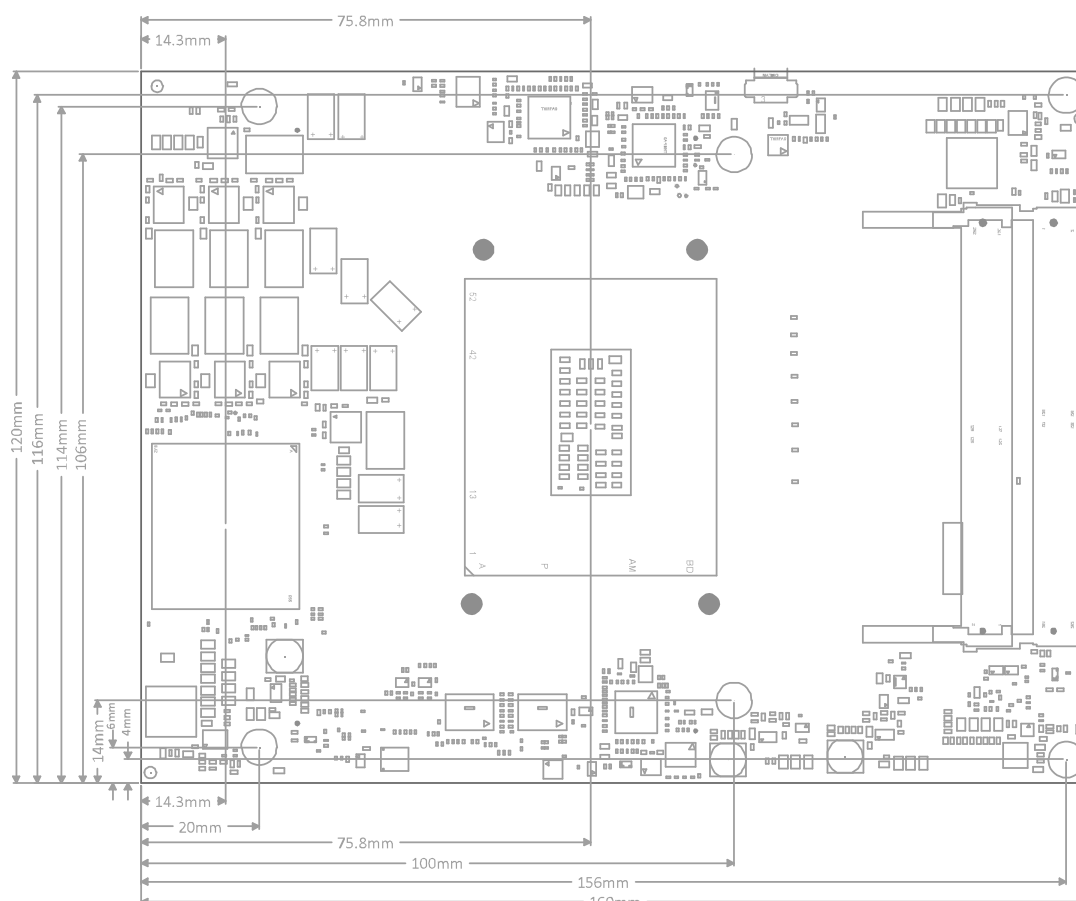


Figure 6: Module Dimensions

3.8.2 Module Height

The COM-HPC specification defines a module height of approximately 15mm, when measured from the bottom of the module's PCB board to the top of the heatspreader. The overall height of the module and carrier board depends on

- which carrier board connectors are used (5mm and 10mm height are available)

- which cooling solution is used. The height of the cooling solution is not specified in the COM-HPC specification

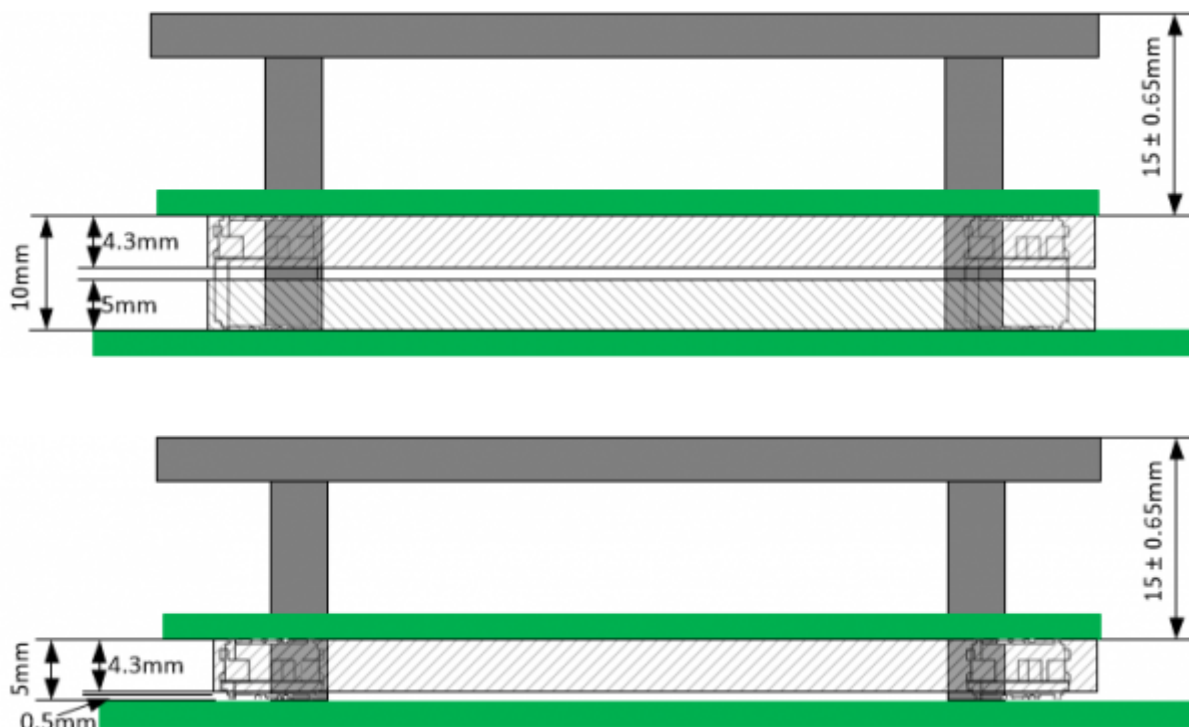


Figure 7: Module and Carrier Height with 10mm and 5mm connector height

3.8.3 Heatspreader Plate Assembly Dimension

Please check our [Customer Section](#) for Heatspreader 3D models and drawings.

3.9 Environmental Specification

The COMh-ccAS support commercial temperature grades with an option of extended temperature grades (E1). The E1 is only available for customized versions only.

Environmental		Description
Commercial Grade	Operating	0°C to +60°C (32°F to 140°F)
	Non-operating	-30°C to +85°C (-22°F to 185°F)
Extended Grade (E1)	Operating	-25°C to +75°C (-13°F to 167°F)
	Non-operating	-30°C to +85°C (-22°F to 185°F)
Relative Humidity		93 % @40°C, non-condensing
Shock (according to IEC / EN 60068-2-27)		Non-operating shock test (half-sinusoidal, 11ms, 15g)
Vibration (according to IEC / EN 60068-2-6)		Non-operating vibration (sinusoidal, 10 Hz to 2000 Hz, +/- 0.15 mm, 2 g)

Table 30: Environmental Specification

3.10 Compliance

The COMh-ccAS complies with the following or the latest status thereof. If modified, the prerequisites for specific approvals may no longer apply. For more information, contact [Kontron Support](#).

Europe - CE Mark	
Directives	2014/30/EU: Electromagnetic Compatibility 2014/35/EU: Low Voltage 2011/65/EU: RoHS II 2001/95/EC: General Product Safety
EMC	EN 55032 Class B: Electromagnetic compatibility of multimedia equipment - Emission Requirements Class A EN 61000-6-2: Electromagnetic compatibility (EMC) Part 6-2: Generic standards - Immunity standard for industrial environments
Safety	EN 62368-1: Audio/video, information and communication technology equipment - Part 1: Safety requirements

Table 31: Compliance CE Mark

USA/Canada	
Safety	UL 62368-1 & CSA C22.2 No. 62368-1 (Component Recognition): Audio/video, information and communication technology equipment - Part 1: Safety requirements Recognized by Underwriters Laboratories Inc. Representative samples of this component have been evaluated by UL and meet applicable UL requirements. UL listings: AZOT2.E147705 AZOT8.E147705
UK CA Mark	
EMC	BS EN 55032 Class B: Electromagnetic compatibility of multimedia equipment - Emission Requirements Class A BS EN 61000-6-2: Electromagnetic compatibility (EMC) Part 6-2: Generic standards - Immunity standard for industrial environments
Safety	BS EN 62368-1: Audio/video, information and communication technology equipment - Part 1: Safety requirements
CB scheme (For International Certifications)	
Safety	IEC 62368-1: Audio/video, information and communication technology equipment - Part 1: Safety requirements

Table 32: Country Compliance



If the product is modified, the prerequisites for specific approvals may no longer apply.



Kontron is not responsible for any radio television interference caused by unauthorized modifications of the delivered product or the substitution or attachment of connecting cables and equipment other than those specified by Kontron. The correction of interference caused by unauthorized modification, substitution or attachment is the user's responsibility.

3.11 MTBF

The MTBF (Mean Time Before Failure) values were calculated using a combination of the manufacturer's test data (if available) and the Telcordia (Bellcore) issue 2 calculation for the remaining parts.

The Telcordia calculation used is "Method 1 Case 3" in a ground benign, controlled environment. This particular method takes into account varying temperature and stress data and the system is assumed

to have not been burned-in. Other environmental stresses (such as extreme altitude, vibration, salt-water exposure) lower MTBF values.

	MTBF Value @40°C	Part Number
MTBF (hours)	TBD	TBD

Table 33: MTBF



The MTBF estimated value above assumes no fan, but a passive heat sinking arrangement. Estimated RTC battery life (as opposed to battery failures) is not accounted for and needs to be considered separately. Battery life depends on both temperature and operating conditions. When the module is connected to external power, the only battery drain is from leakage paths.

4. COM-HPC Interface Connector

The COMh-ccAS is a COM-HPC® Client module containing two 400-pin connectors J1 and J2; each with 4 rows called rows and all rows are named A to D on the primary connector J1 and E to H on the secondary connector J2.



Figure 8: COM-HPC Interface Connectors

1. COM-HPC interface connector (J1)
2. COM-HPC interface connector (J2)

4.1 Connecting COM-HPC Interface Connector to Carrier Board

The COM-HPC interface connectors (J1, J2) are inserted into the corresponding connectors on the carrier board and secured using the mounting points and standoffs. The height of the standoffs depends on the height of the carrier board's connector.



The module is powered on by connecting to the carrier board using the interface connector. Before connecting the module's interface connector to the carrier board's corresponding connector, ensure that the carrier board is switch off and disconnected from the main power supply. Failure to disconnect the main power supply could result in



personal injury and damage to the module and/or carrier board. Observe that only trained personnel aware of the associated dangers connect the module, within an access controlled ESD-safe workplace.



To protect external power lines of peripheral devices, make sure that the wires have the right diameter to withstand the maximum available current. The enclosure of the peripheral device fulfills the fire-protection requirements of IEC/EN 62368.

4.2 J1 and J2 signals

The type of an interface pin consists of the pin type and the buffer type.

Pin Types	Description
I	Input to the Module
O	Output from the Module
I/O	Bi-directional input / output signal
OD	Open drain output
REF	Analog reference voltage output - low voltage (GND min, 3.3V max)

Table 34: Pin Types

Buffer Types	Description
CMOS	Logic input or output. Input thresholds and output levels shall be at or over 80% of supply rail for the high side and at or under 20% of the relevant supply rail for the low side.
LV_DIFF	Low voltage differential signals - may include DP, TMDS, DP_AUX, MIPI D-PHY and HCSL (High Speed Current Steering Logic) used for PCIe clock pairs. Exact details for these variants differ, but the all of these signals are well under 3.3V and the LV_DIFF type label serves well to describe them as a group.
KR	Ethernet 25GBASE-KR or 10GBASE-KR compatible signal.
KX	Ethernet 1000BASE-KX compatible signal.
DP	Display Port compatible signal. Used for DDI interfaces.
MDI	Media Dependent Interface, used for NBASE-T signaling.
NFET	N channel FET output, drain pin, Module can pull low to GND or float.
PCIE	PCI Express compatible differential signals. Includes signaling up to PCIe Gen 5.
PDS	Pull-down strap. Module either pulls these lines to GND or leaves them open.
SATA	SATA compatible differential signals.
USB	USB 2.0 compliant differential signals.
USB_SS	USB Super Speed compliant signals; includes USB 3.0, USB 3.1, USB 3.2 and USB4.

Table 35: Buffer Types

Other Notation	Description
PD	Pull-Down
PU	Pull-Up
2K2	2.2 Kohm resistor (and so on for other values)

Table 36: Other Notation

4.3 Connector J1

4.3.1 Pins A1 - A100

Pin	Signal	Description	Type	Termination	Comment
A1	VCC	Main Input Voltage (4.75-20V)	PWR 12V	—	—
A2	VCC	Main Input Voltage (4.75-20V)	PWR 12V	—	—
A3	VCC	Main Input Voltage (4.75-20V)	PWR 12V	—	—
A4	VCC	Main Input Voltage (4.75-20V)	PWR 12V	—	—
A5	VCC	Main Input Voltage (4.75-20V)	PWR 12V	—	—
A6	VCC	Main Input Voltage (4.75-20V)	PWR 12V	—	—
A7	VCC	Main Input Voltage (4.75-20V)	PWR 12V	—	—
A8	VCC	Main Input Voltage (4.75-20V)	PWR 12V	—	—
A9	VCC	Main Input Voltage (4.75-20V)	PWR 12V	—	—
A10	GND	Power Ground	PWR GND	—	—
A11	BATLOW#	Battery Low	I-3.3	PU 10k 3.3V (S5)	assertion will prevent wake from S3-S5state
A12	PLTRST#	Platform Reset	O-3.3	—	—
A13	GND	Power Ground	PWR GND	—	—
A14	USB7-	USB 2.0 Data Pair Port 7 -	DP-I/O	PD 14.25k to 24.8k in PCH	—
A15	USB7+	USB 2.0 Data Pair Port 7 +	DP-I/O	PD 14.25k to 24.8k in PCH	—
A16	GND	Power Ground	PWR GND	—	—
A17	USB6-	USB 2.0 Data Pair Port 6 -	DP-I/O	PD 14.25k to 24.8k in PCH	—
A18	USB6+	USB 2.0 Data Pair Port 6 +	DP-I/O	PD 14.25k to 24.8k in PCH	—
A19	GND	Power Ground	PWR GND	—	—
A20	DDI1_SDA_AUX-	DDI1 SDA AUX -	I/O-3.3	PU 100K 3.3V (S0)	—
A21	DDI1_SCL_AUX+	DDI1 SCL AUX+	I/O-3.3	PD 100K	—
A22	GND	Power Ground	PWR GND	—	—
A23	DDI1_PAIR0-	DDI1 Pair 0 -	DP-O	—	—
A24	DDI1_PAIR0+	DDI1 Pair 0 +	DP-O	—	—
A25	GND	Power Ground	PWR GND	—	—
A26	DDI1_PAIR1-	DDI1 Pair 1 -	DP-O	—	—
A27	DDI1_PAIR1+	DDI1 Pair 1 +	DP-O	—	—
A28	GND	Power Ground	PWR GND	—	—
A29	DDI1_PAIR2-	DDI1 Pair 2 -	DP-O	—	—
A30	DDI1_PAIR2+	DDI1 Pair 2 +	DP-O	—	—
A31	GND Power	Ground	PWR GND	—	—
A32	DDI1_PAIR3-	DDI1 Pair 3 -	DP-O	—	—
A33	DDI1_PAIR3+	DDI1 Pair 3 +	DP-O	—	—
A34	GND Power	Ground	PWR GND	—	—
A35	eDP_AUX-	eDP AUX -	I/O PCIE LV_DIFF	—	—
A36	eDP_AUX+	eDP AUX +	I/O PCIE LV_DIFF	—	—
A37	GND Power	Ground	PWR GND	—	—
A38	eDP_TX0-	eDP Pair 0 -	O LV_DIFF	—	—
A39	eDP_TX0+	eDP Pair 0 +	O LV_DIFF	—	—
A40	GND	Power Ground	PWR GND	—	—
A41	eDP_TX1-	eDP Pair 0 -	O LV_DIFF	—	—
A42	eDP_TX1+	eDP Pair 0 +	O LV_DIFF	—	—
A43	GND Power	Ground	PWR GND	—	—
A44	eDP_TX2-	eDP Pair 0 -	O LV_DIFF	—	—
A45	eDP_TX2+	eDP Pair 0 +	O LV_DIFF	—	—
A46	GND	Power Ground	PWR GND	—	—
A47	eDP_TX3-	eDP Pair 0 -	O LV_DIFF	—	—
A48	eDP_TX3+	eDP Pair 0 +	O LV_DIFF	—	—
A49	GND	Power Ground	PWR GND	—	—

Pin	Signal	Description	Type	Termination	Comment
A50	eSPI_IO0	eSPI Master Data I/O 0	I/O-1.8	—	—
A51	eSPI_IO1	eSPI Master Data I/O 1	I/O-1.8	—	—
A52	eSPI_IO2	eSPI Master Data I/O 2	I/O-1.8	—	—
A53	eSPI_IO3	eSPI Master Data I/O 3	I/O-1.8	—	—
A54	eSPI_CLK	eSPI Master Clock Output	O-1.8	—	—
A55	GND	Power Ground	PWR GND	—	—
A56	PCIe_CLKREQ0_LO#	PCI Express clock request signal	I/O-3.3	PU 10k 3.3V (S5)	—
A57	PCIe_CLKREQ0_HI#	PCI Express clock request signal	I/O-3.3	PU 10k 3.3V (S5)	—
A58	GND	Power Ground	PWR GND	—	—
A59	PCIe_BMC_TX-	PCI Express Diff Transmit - for Carrier BMC O	PCIe	NC	—
A60	PCIe_BMC_TX+	PCI Express Diff Transmit + for Carrier BMC O	PCIe	NC	—
A61	GND	Power Ground	PWR GND	—	—
A62	PCIe08_TX-	PCI Express Lane 8 Transmit - Group 0 High O	PCIe	—	—
A63	PCIe08_TX+	PCI Express Lane 8 Transmit + Group 0 High O	PCIe	—	—
A64	GND	Power Ground	PWR GND	—	—
A65	PCIe09_TX-	PCI Express Lane 9 Transmit - Group 0 High O	PCIe	—	—
A66	PCIe09_TX+	PCI Express Lane 9 Transmit + Group 0 High O	PCIe	—	—
A67	GND	Power Ground	PWR GND	—	—
A68	PCIe10_TX-	PCI Express Lane 10 Transmit - Group 0 High O	PCIe	—	—
A69	PCIe10_TX+	PCI Express Lane 10 Transmit + Group 0 High O	PCIe	—	—
A70	GND	Power Ground	PWR GND	—	—
A71	PCIe11_TX-	PCI Express Lane 11 Transmit - Group 0 High O	PCIe	—	—
A72	PCIe11_TX+	PCI Express Lane 11 Transmit + Group 0 High O	PCIe	—	—
A73	GND	Power Ground	PWR GND	—	—
A74	PCIe12_TX-	PCI Express Lane 12 Transmit - Group 0 High O	PCIe	—	—
A75	PCIe12_TX+	PCI Express Lane 12 Transmit + Group 0 High O	PCIe	—	—
A76	GND	Power Ground	PWR GND	—	—
A77	PCIe13_TX-	PCI Express Lane 13 Transmit - Group 0 High O	PCIe	—	—
A78	PCIe13_TX+	PCI Express Lane 13 Transmit + Group 0 High O	PCIe	—	—
A79	GND	Power Ground	PWR GND	—	—
A80	PCIe14_TX-	PCI Express Lane 14 Transmit - Group 0 High O	PCIe	—	—
A81	PCIe14_TX+	PCI Express Lane 14 Transmit + Group 0 High O	PCIe	—	—
A82	GND	Power Ground	PWR GND	—	—
A83	PCIe15_TX-	PCI Express Lane 15 Transmit - Group 0 High O	PCIe	—	—
A84	PCIe15_TX+	PCI Express Lane 15 Transmit + Group 0 High O	PCIe	—	—
A85	GND	Power Ground	PWR GND	—	—
A86	VCC_RTC	Real-Time Clock Circuit Power Input	PWR 3V	—	voltage range 2.3-5.5V
A87	SUS_CLK	Clock used by Carrier peripherals	O-3.3	—	—
A88	GPIO_00	General purpose input/output 0	I/O-3.3	PU 100k 3.3V (S5)	—
A89	GPIO_01	General purpose input/output 1	I/O-3.3	PU 100k 3.3V (S5)	—
A90	GPIO_02	General purpose input/output 2	I/O-3.3	PU 100k 3.3V (S5)	—
A91	GPIO_03	General purpose input/output 3	I/O-3.3	PU 100k 3.3V (S5)	—
A92	GPIO_04	General purpose input/output 4	I/O-3.3	PU 100k 3.3V (S5)	—
A93	GPIO_05	General purpose input/output 5	I/O-3.3	PU 100k 3.3V (S5)	—
A94	GPIO_06	General purpose input/output 6	I/O-3.3	PU 100k 3.3V (S5)	—
A95	GPIO_07	General purpose input/output 7	I/O-3.3	PU 100k 3.3V (S5)	—
A96	GPIO_08	General purpose input/output 8	I/O-3.3	PU 100k 3.3V (S5)	—
A97	GPIO_09	General purpose input/output 9	I/O-3.3	PU 100k 3.3V (S5)	—
A98	GPIO_10	General purpose input/output 10	I/O-3.3	PU 100k 3.3V (S5)	—
A99	GPIO_11	General purpose input/output 11	I/O-3.3	PU 100k 3.3V (S5)	—
A100	TYPE0	Pin-out Type implementation	PDS	—	—

Table 37: Connector J1 Pins A1 - A100

4.3.2 Pins B1 - B100

Pin	Signal	Description	Type	Termination	Comment
B1	VCC	Main Input Voltage (4.75-20V)	PWR 12V	—	—
B2	PWRBTN#	Power Button	I-3.3	PU 10k 3.3V (S5)	—

Pin	Signal	Description	Type	Termination	Comment
B3	VCC	Main Input Voltage (4.75-20V)	PWR 12V	—	—
B4	THERMTRIP#	Thermal Trip	O-3.3	PU 10K 3.3V (S5)	Thermal Trip Event, transition to S5 indicator
B5	VCC	Main Input Voltage (4.75-20V)	PWR 12V	—	—
B6	TAMPER#	Tamper or Intrusion detection line	I-3.3	PU 1M 3.3V (RTC_G3)	—
B7	VCC	Main Input Voltage (4.75-20V)	PWR 12V	—	—
B8	SUS_S3#	Suspend To RAM (or deeper) Indicator	O-3.3	PD 100K	For ADL-S glitch free requirement
B9	VCC	Main Input Voltage (4.75-20V)	PWR 12V	—	—
B10	WD_STROBE#	Watchdog timer strobe input	I-3.3	PU 10k 3.3V (S0)	—
B11	WD_OUT	Watchdog timer indication	O-3.3	PD 10K	—
B12	GND	Power Ground	PWR GND	—	—
B13	USB5-	USB 2.0 Data Pair Port 5 -	I/O-3.3	PD 14.25K to 24.8K in PCH	—
B14	USB5+	USB 2.0 Data Pair Port 5 +	I/O-3.3	PD 14.25K to 24.8K in PCH	—
B15	GND	Power Ground	PWR GND	PD 14.25K to 24.8K in PCH	—
B16	USB4-	USB 2.0 Data Pair Port 4 -	I/O-3.3	PD 14.25K to 24.8K in PCH	—
B17	USB4+	USB 2.0 Data Pair Port 4 +	I/O-3.3	—	—
B18	GND	Power Ground	PWR GND	—	—
B19	I2S_LRCLK/SNDW_CLK3/HDA_SYNC	I2S L/R Clock. Alternative use as Soundwire 3 clock or HDA sample synchronization signal	O-1.8	—	—
B20	I2S_DOUT/SNDW_DAT3 /HDA_SDO	I2S Data Out. Input in I2S mode Alternative use as bi-directional Soundwire 3 data lane or HDA serial TDM data output	I/O-1.8	—	—
B21	I2S_MCLK/HDA_RST#	I2S Master Clock. Alternative use as HDA reset output	O-1.8	—	—
B22	I2S_DIN/SNDW_DAT2/H DA_SDI	I2S Data In. Input in I2S mode. Alternative use as bi-directional Soundwire 2 data lane or HDA serial TDM data input	I/O-1.8	—	—
B23	I2S_CLK/SNDW_CLK2/H DA_BCLK	I2S Clock. Alternative use as Soundwire 2 clock or HDA serial data clock	O-1.8	—	—
B24	VCC_5V_SBY	5V Standby	PWR 5V (S5)	—	—
B25	USB67_OC#	USB over-current sense 6 & 7	I-3.3	PU 10K 3.3V (S5)	—
B26	USB45_OC#	USB over-current sense 4 & 5	I-3.3	PU 10K 3.3V (S5)	—
B27	USB23_OC#	USB over-current sense 2 & 3	I-3.3	PU 10K 3.3V (S5)	—
B28	USB01_OC#	USB over-current sense 0 & 1	I-3.3	PU 10K 3.3V (S5)	—
B29	SML1_CLK	SML 1 Clock Line	I/O-3.3	PU 768R 3.3V (S5)	—
B30	SML1_DAT	SML 1 Data Line	I/O-3.3	PU 768R 3.3V (S5)	—
B31	PMCALERT#	Active low Alert signal (SML 1)	I-3.3	PU 10K 3.3V (S5)	—
B32	SML0_CLK	SML 0 Clock Line	I/O-3.3	PU 499R 3.3V (S5)	—
B33	SML0_DAT	SML 0 Data Line	I/O-3.3	PU 499R 3.3V (S5)	—
B34	USB_PD_ALERT#	Active low Alert signal (USB)	I-3.3	PU 10K 3.3V (S5)	—
B35	USB_PD_I2C_CLK	I2C clock line	I/O-3.3	PU 10K 3.3V (S5)	—
B36	USB_PD_I2C_DAT	I2C data line	I/O-3.3	PU 10K 3.3V (S5)	—
B37	USB_RT_ENA	Power Enable for USB Retimers	O-3.3	—	—
B38	USB1_LSRX	USB 4 Receive channel 1	I-3.3	PD 10K	—
B39	USB1_LSTX	USB 4 Transmit channel 1	O-3.3	PD 10K	—
B40	USB0_LSRX	USB 4 Receive channel 0	I-3.3	PD 10K	—
B41	USB0_LSTX	USB 4 Transmit channel 0	O-3.3	PD 10K	—
B42	GND	Power Ground	PWR GND	—	—
B43	USB0_AUX-	USB4 DP Aux channel 0 -	LV_Diff	NC	—
B44	USB0_AUX+	USB4 DP Aux channel 0 +	LV_Diff	NC	—
B45	LID#	LID switch	I-3.3	PU 10K 3.3V (S5)	—
B46	SLEEP#	Sleep button	I-3.3	PU 10K 3.3V (S5)	—
B47	VCC_BOOT_SPI	Power supply for Carrier Board SPI	PWR 1.8/3.3	—	—
B48	BOOT_SPI_CS#	Clock from Module chipset to Carrier SPI	O	PU 4.7K VCC_BOOT_SPI	—
B49	BSEL0	Boot Select Pin 0	I	PU 10K 3.3V (S5)	—

Pin	Signal	Description	Type	Termination	Comment
B50	BSEL1	Boot Select Pin 1	I	PU 10K 3.3V (S5)	—
B51	BSEL2	Boot Select Pin 2	I	PU 10K 3.3V (S5)	—
B52	eSPI_ALERT0#	eSPI Alert 0	I-1.8	—	—
B53	eSPI_ALERT1#	eSPI Alert 0	I-1.8	—	—
B54	eSPI_CS0#	eSPI Master Chip Select 0	O-1.8	—	—
B55	eSPI_CS1#	eSPI Master Chip Select 1	O-1.8	—	—
B56	eSPI_RST#	eSPI Reset	O-1.8	—	—
B57	GND	Power Ground	PWR GND	—	—
B58	PCIe_BMC_RX-	PCI Express Diff Receive - for Carrier BMC I	PCIe	NC	—
B59	PCIe_BMC_RX+	PCI Express Diff Receive + for Carrier BMC I	PCIe	NC	—
B60	GND	Power Ground PWR	GND	—	—
B61	PCIe08_RX-	PCI Express Lane 8 Receive - Group 0 High I	PCIe	—	—
B62	PCIe08_RX+	PCI Express Lane 8 Receive + Group 0 High I	PCIe	—	—
B63	GND	Power Ground PWR	GND	—	—
B64	PCIe09_RX-	PCI Express Lane 9 Receive - Group 0 High I	PCIe	—	—
B65	PCIe09_RX+	PCI Express Lane 9 Receive + Group 0 High I	PCIe	—	—
B66	GND	Power Ground PWR	GND	—	—
B67	PCIe10_RX-	PCI Express Lane 10 Receive - Group 0 High I	PCIe	—	—
B68	PCIe10_RX+	PCI Express Lane 10 Receive + Group 0 High I	PCIe	—	—
B69	GND	Power Ground PWR	GND	—	—
B70	PCIe11_RX-	PCI Express Lane 11 Receive - Group 0 High I	PCIe	—	—
B71	PCIe11_RX+	PCI Express Lane 11 Receive + Group 0 High I	PCIe	—	—
B72	GND	Power Ground PWR	GND	—	—
B73	PCIe12_RX-	PCI Express Lane 12 Receive - Group 0 High I	PCIe	—	—
B74	PCIe12_RX+	PCI Express Lane 12 Receive + Group 0 High I	PCIe	—	—
B75	GND	Power Ground PWR	GND	—	—
B76	PCIe13_RX-	PCI Express Lane 13 Receive - Group 0 High I	PCIe	—	—
B77	PCIe13_RX+	PCI Express Lane 13 Receive + Group 0 High I	PCIe	—	—
B78	GND	Power Ground PWR	GND	—	—
B79	PCIe14_RX-	PCI Express Lane 14 Receive - Group 0 High I	PCIe	—	—
B80	PCIe14_RX+	PCI Express Lane 14 Receive + Group 0 High I	PCIe	—	—
B81	GND	Power Ground PWR	GND	—	—
B82	PCIe15_RX-	PCI Express Lane 15 Receive - Group 0 High I	PCIe	—	—
B83	PCIe15_RX+	PCI Express Lane 15 Receive + Group 0 High I	PCIe	—	—
B84	GND	Power Ground PWR	GND	—	—
B85	TEST#	Test mode I	OD-3.3	PU 10K 3.3V (S5)	—
B86	RSMRST_OUT#	Resume Reset	O-3.3	PD 10K	Buffered copy of internal Module RSMRST#
B87	UART1_TX	UART Transmit Port 1	O-3.3	—	—
B88	UART1_RX	UART Receive Port 1	I-3.3	PU 10K 3.3V (S5)	—
B89	UART1_RTS#	UART Request to Send Port 1	O-3.3	—	—
B90	UART1_CTS#	UART Clear to Send Port 1	I-3.3	PU 10K 3.3V (S5)	—
B91	IPMB_CLK	Clock I/O for IPMB Port I/O	OD-3.3	PU 47k 3.3V (S5)	—
B92	IPMB_DAT	Data I/O for IPMB Port I/O	OD-3.3	PU 47k 3.3V (S5)	—
B93	GP_SPI_MOSI	SPI Master Out Slave In	O-3.3	—	—
B94	GP_SPI_MISO	SPI Master IN Slave OUT	I-3.3	—	—

Pin	Signal	Description	Type	Termination	Comment
B95	GP_SPI_CS0#	SPI Chip Select	O-3.3	—	—
B96	GP_SPI_CS1#	SPI Chip Select	O-3.3	—	—
B97	GP_SPI_CS2#	SPI Chip Select	O-3.3	—	—
B98	GP_SPI_CS3#	SPI Chip Select	O-3.3	—	—
B99	GP_SPI_CLK	SPI Clock	O-3.3	—	—
B100	GP_SPI_ALERT#	SPI Alert (interrupt)	I-3.3	PU 10K 3.3V (S5)	—

Table 38: Connector J1 Pins B1 - B100

4.3.3 Pins C1 - C100

Pin	Signal	Description	Type	Termination	Comment
C1	VCC	Main Input Voltage (4.75-20V)	PWR 12V	—	—
C2	RSTBTN#	Reset button input	I-3.3	PU 3.3V (S5)	—
C3	VCC	Main Input Voltage (4.75-20V)	PWR 12V	—	—
C4	CARRIER_HOT#	Temp sensor for over-temp	I-3.3	PU 3.3V (S0)	—
C5	VCC	Main Input Voltage (4.75-20V)	PWR 12V	—	—
C6	VIN_PWROK	Power OK from Main supply	I-3.3	PU 3.3V (S5)	—
C7	VCC	Main Input Voltage (4.75-20V)	PWR 12V	—	—
C8	SUS_S4_S5#	Suspend To Disk (S4) or Soft Off (S5) Indicator	O-3.3	—	—
C9	VCC	Main Input Voltage (4.75-20V)	PWR 12V	—	—
C10	GND	Power Ground	PWR GND	—	—
C11	FAN_PWMOUT	Fan speed control	O-3.3	—	—
C12	FAN_TACHIN	Fan tachometer	I-3.3	PU 3.3V (S0)	—
C13	GND	Power Ground	PWR GND	—	—
C14	USB3-	USB 2.0 Data Pair Port 3 -	I/O-3.3	PD 14.25K to 24.8K in PCH	—
C15	USB3+	USB 2.0 Data Pair Port 3 +	I/O-3.3	PD 14.25K to 24.8K in PCH	—
C16	GND	Power Ground	PWR GND	—	—
C17	USB2-	USB 2.0 Data Pair Port 2 -	I/O-3.3	PD 14.25K to 24.8K in PCH	—
C18	USB2+	USB 2.0 Data Pair Port 2 +	I/O-3.3	PD 14.25K to 24.8K in PCH	—
C19	GND	Power Ground	PWR GND	—	—
C20	SNDW_DMIC_CLK1	Clock for Soundwire transaction	I/O-1.8	—	—
C21	SNDW_DMIC_DAT1	PCM Audio data	O-1.8	—	—
C22	GND	Power Ground	PWR GND	—	—
C23	SNDW_DMIC_CLK0	Clock for Soundwire transaction	I/O-1.8	—	—
C24	SNDW_DMIC_DAT0	PCM Audio data	O-1.8	—	—
C25	GND	Power Ground	PWR GND	—	—
C26	DDIO_DDC_AUX_SEL	DDIO AUX function select	I-3.3	PD 1M	—
C27	DDI1_DDC_AUX_SEL	DDI1 AUX function select	I-3.3	PD 1M	—
C28	DDIO_HPD	DDIO Hot Plug Detect	I-3.3	PD 100k	—
C29	DDI1_HPD	DDI1 Hot Plug Detect	I-3.3	PD 100k	—
C30	eDP_HPD	eDP Hot Plug Detect	I-3.3	PD 100k	—
C31	eDP_VDD_EN	eDP Power Enable	O-3.3	PD 100K	—
C32	eDP_BKLT_EN	eDP Backlight Enable	O-3.3	PD 100K	—
C33	eDP_BKLTCTL	eDP Backlight Brightness Control	O-3.3	PD 100K	—
C34	GND	Power Ground	PWR GND	—	—
C35	USB1_AUX-	USB4 DP Aux channel 1 -	LV_Diff	NC	—
C36	USB1_AUX+	USB4 DP Aux channel 1+	LV_Diff	NC	—
C37	GND	Power Ground	PWR GND	—	—
C38	USB1_SSRX0-	USB Super Speed Pair 1 Receive 0 -	I USB SS	—	—
C39	USB1_SSRX0+	USB Super Speed Pair 1 Receive 0	I USB SS	—	—
C40	GND	Power Ground	PWR GND	—	—
C41	USB1_SSRX1-	USB Super Speed Pair 1 Receive 1 -	I USB SS	—	—
C42	USB1_SSRX1+	USB Super Speed Pair 1 Receive 1 +	I USB SS	—	—
C43	GND	Power Ground	PWR GND	—	—
C44	USB0_SSRX0-	USB Super Speed Pair 0 Receive 0 -	I USB SS	—	—
C45	USB0_SSRX0+	USB Super Speed Pair 0 Receive 0 +	I USB SS	—	—
C46	GND	Power Ground	PWR GND	—	—
C47	USB0_SSRX1-	USB Super Speed Port 0 Receive 1 -	I USB SS	—	—
C48	USB0_SSRX1+	USB Super Speed Port 0 Receive 1 +	I USB SS	—	—

Pin	Signal	Description	Type	Termination	Comment
C49	GND	Power Ground	PWR GND	—	—
C50	BOOT_SPI_IO0	SPI Data 0	I/O	—	—
C51	BOOT_SPI_IO1	SPI Data 1	I/O	—	—
C52	BOOT_SPI_IO2	SPI Data 2	I/O	—	—
C53	BOOT_SPI_IO3	SPI Data 3	I/O	—	—
C54	BOOT_SPI_CLK	Clock Module to Carrier SPI	O	—	—
C55	GND	Power Ground	PWR GND	—	—
C56	PCIe_REFCLK0_HI-	Reference clock PCIe Group 0 High -	O LV_DIFF	—	—
C57	PCIe_REFCLK0_HI+	Reference clock PCIe Group 0 High +	O LV_DIFF	—	—
C58	GND	Power Ground	PWR GND	—	—
C59	PCIe_REFCLK0_LO-	Reference clock PCIe Group 0 Low -	O LV_DIFF	—	—
C60	PCIe_REFCLK0_LO+	Reference clock PCIe Group 0 Low +	O LV_DIFF	—	—
C61	GND	Power Ground	PWR GND	—	—
C62	PCIe00_RX-	PCI Express Lane 0 Receive - Group 0 Low	I PCIe	—	—
C63	PCIe00_RX+	PCI Express Lane 0 Receive + Group 0 Low	I PCIe	—	—
C64	GND	Power Ground	PWR GND	—	—
C65	PCIe01_RX-	PCI Express Lane 1 Receive - Group 0 Low	I PCIe	—	—
C66	PCIe01_RX+	PCI Express Lane 1 Receive + Group 0 Low	I PCIe	—	—
C67	GND	Power Ground	PWR GND	—	—
C68	PCIe02_RX-	PCI Express Lane 2 Receive - Group 0 Low	I PCIe	—	—
C69	PCIe02_RX+	PCI Express Lane 2 Receive + Group 0 Low	I PCIe	—	—
C70	GND	Power Ground	PWR GND	—	—
C71	PCIe03_RX-	PCI Express Lane 3 Receive - Group 0 Low	I PCIe	—	—
C72	PCIe03_RX+	PCI Express Lane 3 Receive + Group 0 Low	I PCIe	—	—
C73	GND	Power Ground	PWR GND	—	—
C74	PCIe04_RX-	PCI Express Lane 4 Receive - Group 0 Low	I PCIe	—	—
C75	PCIe04_RX+	PCI Express Lane 4 Receive + Group 0 Low	I PCIe	—	—
C76	GND	Power Ground	PWR GND	—	—
C77	PCIe05_RX-	PCI Express Lane 5 Receive - Group 0 Low	I PCIe	—	—
C78	PCIe05_RX+	PCI Express Lane 5 Receive + Group 0 Low	I PCIe	—	—
C79	GND	Power Ground	PWR GND	—	—
C80	PCIe06_RX-	PCI Express Lane 6 Receive - Group 0 Low	I PCIe	—	—
C81	PCIe06_RX+	PCI Express Lane 6 Receive + Group 0 Low	I PCIe	—	—
C82	GND	Power Ground	PWR GND	—	—
C83	PCIe07_RX-	PCI Express Lane 7 Receive - Group 0 Low	I PCIe	—	—
C84	PCIe07_RX+	PCI Express Lane 7 Receive + Group 0 Low	I PCIe	—	—
C85	GND	Power Ground	PWR GND	—	—
C86	SMB_CLK	SMB Clock	I/O OD-3.3	PU 3.3K 3.3V (S5)	—
C87	SMB_DAT	SMB Data	I/O OD-3.3	PU 3.3K 3.3V (S5)	—
C88	SMB_ALERT#	SMB Alert	I-3.3	PU 2.26K 3.3V (S5)	—
C89	UART0_TX	UART Transmit Port 0	O-3.3	—	—
C90	UART0_RX	UART Receive Port 0	I-3.3	PU 10K 3.3V (S5)	—
C91	UART0_RTS#	UART Request to Send Port 0	O-3.3	—	—
C92	UART0_CTS#	UART Clear to Send Port 0	I-3.3	PU 10K 3.3V (S5)	—
C93	I2C0_CLK	I2C Clock Port 0 I/O	OD-3.3	PU 10K 3.3V (S5)	—
C94	I2C0_DAT	I2C Data Port 0 I/O	OD-3.3	PU 10K 3.3V (S5)	—
C95	I2C0_ALERT#	I2C Alert	I-3.3	PU 10K 3.3V (S5)	—
C96	I2C1_CLK	I2C Clock Port 1	I/O OD-3.3	PU 2k2 1.8V (S5)	—
C97	I2C1_DAT	I2C Data Port 1	I/O OD-3.3	PU 2k2 1.8V (S5)	—
C98	NBASET0_SDP	NBASE-T Ethernet Port 0	SDP I/O-3.3	—	—
C99	NBASET0_CTREF	NBASE-T Ethernet Port 0 Reference voltage	O-3.3	—	—
C100	TYPE1	—	—	—	—

Table 39: Connector J1 Pins C1 - C100

4.3.4 Pins D1 - D100

Pin	Signal	Description	Type	Termination	Comment
D1	VCC	Main Input Voltage (4.75-20V)	PWR 12V	—	—
D2	VCC	Main Input Voltage (4.75-20V)	PWR 12V	—	—

Pin	Signal	Description	Type	Termination	Comment
D3	VCC	Main Input Voltage (4.75-20V)	PWR 12V	—	—
D4	VCC	Main Input Voltage (4.75-20V)	PWR 12V	—	—
D5	VCC	Main Input Voltage (4.75-20V)	PWR 12V	—	—
D6	VCC	Main Input Voltage (4.75-20V)	PWR 12V	—	—
D7	VCC	Main Input Voltage (4.75-20V)	PWR 12V	—	—
D8	VCC	Main Input Voltage (4.75-20V)	PWR 12V	—	—
D9	VCC	Main Input Voltage (4.75-20V)	PWR 12V	—	—
D10	WAKE0#	PCI Express Wake Event	I/O-3.3	PU 10K 3.3V (S5)	—
D11	WAKE1#	General Purpose Wake Event	I-3.3	PU 10K 3.3V (S5)	—
D12	GND	Power Ground	PWR GND	—	—
D13	USB1-	USB 2.0 Data Pair Port 1 -	I/O-3.3	PD 14.25K to 24.8K in PCH	—
D14	USB1+	USB 2.0 Data Pair Port 1 +	I/O-3.3	PD 14.25K to 24.8K in PCH	—
D15	GND	Power Ground	PWR GND	—	—
D16	USB0-	USB 2.0 Data Pair Port 0 -	I/O-3.3	PD 14.25K to 24.8K in PCH	—
D17	USB0+	USB 2.0 Data Pair Port 0 +	I/O-3.3	PD 14.25K to 24.8K in PCH	—
D18	GND	Power Ground	PWR GND	—	—
D19	DDIO_SDA_AUX-	DDIO SDA AUX -	I/O-3.3	PU 100k 3.3V (S0)	—
D20	DDIO_SCL_AUX+	DDIO SCL AUX+	I/O-3.3	PD 100k	—
D21	GND	Power Ground	PWR GND	—	—
D22	DDIO_PAIR0-	DDIO Pair 0 -	DP-O	—	—
D23	DDIO_PAIR0+	DDIO Pair 0 +	DP-O	—	—
D24	GND	Power Ground	PWR GND	—	—
D25	DDIO_PAIR1-	DDIO Pair 1 -	DP-O	—	—
D26	DDIO_PAIR1+	DDIO Pair 1 +	DP-O	—	—
D27	GND	Power Ground	PWR GND	—	—
D28	DDIO_PAIR2-	DDIO Pair 2 -	DP-O	—	—
D29	DDIO_PAIR2+	DDIO Pair 2 +	DP-O	—	—
D30	GND	Power Ground	PWR GND	—	—
D31	DDIO_PAIR3-	DDIO Pair 3 -	DP-O	—	—
D32	DDIO_PAIR3+	DDIO Pair 3 +	DP-O	—	—
D33	GND	Power Ground	PWR GND	—	—
D34	AC_PRESENT	AC power	I-3.3	PU 100K 3.3V (S5)	—
D35	RSVD	Reserved Pin	—	NC	—
D36	GND	Power Ground	PWR GND	—	—
D37	USB1_SSTX0-	USB Super Speed Pair 1 Transmit 0 -	O USB SS	—	—
D38	USB1_SSTX0+	USB Super Speed Pair 1 Transmit 0 + O	USB SS	—	—
D39	GND	Power Ground	PWR GND	—	—
D40	USB1_SSTX1-	USB Super Speed Pair 1 Transmit 1 - O	USB SS	—	—
D41	USB1_SSTX1+	USB Super Speed Pair 1 Transmit 1 + O	USB SS	—	—
D42	GND	Power Ground	PWR GND	—	—
D43	USB0_SSTX0-	USB Super Speed Pair 0 Transmit 0 - O	USB SS	—	—
D44	USB0_SSTX0+	USB Super Speed Pair 0 Transmit 0 + O	USB SS	—	—
D45	GND	Power Ground	PWR GND	—	—
D46	USB0_SSTX1-	USB Super Speed Pair 0 Transmit 1 -	O USB SS	—	—
D47	USB0_SSTX1+	USB Super Speed Pair 0 Transmit 1 +	O USB SS	—	—
D48	GND	Power Ground	PWR GND	—	—
D49	SATA0_RX-	SATA 0 Receive Pair -	I SATA	—	—
D50	SATA0_RX+	SATA 0 Receive Pair +	I SATA	—	—
D51	GND	Power Ground	PWR GND	—	—
D52	SATA0_TX-	SATA 0 Transmit Pair -	O SATA	—	—
D53	SATA0_TX+	SATA 0 Transmit Pair +	O SATA	—	—
D54	GND	Power Ground	PWR GND	—	—
D55	SATA1_RX-	SATA 1 Receive Pair -	I SATA	—	—
D56	SATA1_RX+	SATA 1 Receive Pair +	I SATA	—	—
D57	GND	Power Ground	PWR GND	—	—
D58	SATA1_TX-	SATA 1 Transmit Pair -	O SATA	—	—
D59	SATA1_TX+	SATA 1 Transmit Pair +	O SATA	—	—
D60	GND	Power Ground	PWR GND	—	—
D61	PCIe00_TX-	PCI Express Lane 0 Transmit - Group 0 Low	O PCIe	—	—
D62	PCIe00_TX+	PCI Express Lane 0 Transmit + Group 0 Low	O PCIe	—	—
D63	GND	Power Ground	PWR GND	—	—

Pin	Signal	Description	Type	Termination	Comment
D64	PCIe01_TX-	PCI Express Lane 1 Transmit - Group 0 Low	O PCIe	—	—
D65	PCIe01_TX+	PCI Express Lane 1 Transmit + Group 0 Low	O PCIe	—	—
D66	GND	Power Ground	PWR GND	—	—
D67	PCIe02_TX-	PCI Express Lane 2 Transmit - Group 0 Low	O PCIe	—	—
D68	PCIe02_TX+	PCI Express Lane 2 Transmit + Group 0 Low	O PCIe	—	—
D69	GND	Power Ground	PWR GND	—	—
D70	PCIe03_TX-	PCI Express Lane 3 Transmit - Group 0 Low	O PCIe	—	—
D71	PCIe03_TX+	PCI Express Lane 3 Transmit + Group 0 Low	O PCIe	—	—
D72	GND	Power Ground	PWR GND	—	—
D73	PCIe04_TX-	PCI Express Lane 4 Transmit - Group 0 Low	O PCIe	—	—
D74	PCIe04_TX+	PCI Express Lane 4 Transmit + Group 0 Low	O PCIe	—	—
D75	GND	Power Ground	PWR GND	—	—
D76	PCIe05_TX-	PCI Express Lane 5 Transmit - Group 0 Low	O PCIe	—	—
D77	PCIe05_TX+	PCI Express Lane 5 Transmit + Group 0 Low	O PCIe	—	—
D78	GND	Power Ground	PWR GND	—	—
D79	PCIe06_TX-	PCI Express Lane 6 Transmit - Group 0 Low	O PCIe	—	—
D80	PCIe06_TX+	PCI Express Lane 6 Transmit + Group 0 Low	O PCIe	—	—
D81	GND	Power Ground	PWR GND	—	—
D82	PCIe07_TX-	PCI Express Lane 7 Transmit - Group 0 Low	O PCIe	—	—
D83	PCIe07_TX+	PCI Express Lane 7 Transmit + Group 0 Low	O PCIe	—	—
D84	GND	Power Ground	PWR GND	—	—
D85	NBASET0_MDI0-	NBASE-T Ethernet Port 0 MDI Pair 0 -	I/O-3.3	—	—
D86	NBASET0_MDI0+	NBASE-T Ethernet Port 0 MDI Pair 0 +	I/O-3.3	—	—
D87	GND	Power Ground	PWR GND	—	—
D88	NBASET0_MDI1-	NBASE-T Ethernet Port 0 MDI Pair 1 -	I/O-3.3	—	—
D89	NBASET0_MDI1+	NBASE-T Ethernet Port 0 MDI Pair 1 +	I/O-3.3	—	—
D90	GND	Power Ground	PWR GND	—	—
D91	NBASET0_MDI2-	NBASE-T Ethernet Port 0 MDI Pair 2 -	I/O-3.3	—	—
D92	NBASET0_MDI2+	NBASE-T Ethernet Port 0 MDI Pair 2 +	I/O-3.3	—	—
D93	GND	Power Ground	PWR GND	—	—
D94	NBASET0_MDI3-	NBASE-T Ethernet Port 0 MDI Pair 3 -	I/O-3.3	—	—
D95	NBASET0_MDI3+	NBASE-T Ethernet Port 0 MDI Pair 3 +	I/O-3.3	—	—
D96	GND	Power Ground	PWR GND	—	—
D97	NBASET0_LINK_MAX#	NBASE-T Ethernet Port 0 MAX speed Link indicator	O-3.3	—	—
D98	NBASET0_LINK_MID#	NBASE-T Ethernet Port 0 MID speed Link indicator	O-3.3	—	—
D99	NBASET0_LINK_ACT#	NBASE-T Ethernet Port 0 controller activity indicator	O-3.3	—	—
D100	TYPE2	—	—	—	—

Table 40: Connector J1 Pins D1 - D100

4.4 Connector J2

4.4.1 Pins E1 - E100

Pin	Signal	Description	Type	Termination	Comment
E1	RAPID_SHUTDOWN	Trigger for Rapid Shutdown	I-5.0	NC	—
E2	GND	Power Ground	PWR GND	—	—
E3	DDI2_SDA_AUX-	DDI2 SDA AUX -	I/O-3.3	PU 100k 3.3V (S0)	—
E4	DDI2_SCL_AUX+	DDI2 SCL AUX+	I/O-3.3	PD 100k	—
E5	GND	Power Ground	PWR GND	—	—
E6	DDI2_PAIR0-	DDI2 Pair 0 -	DP-O	—	—
E7	DDI2_PAIR0+	DDI2 Pair 0 +	DP-O	—	—
E8	GND	Power Ground	PWR GND	—	—
E9	DDI2_PAIR1-	DDI2 Pair 1 -	DP-O	—	—
E10	DDI2_PAIR1+	DDI2 Pair 1 +	DP-O	—	—
E11	GND	Power Ground	PWR GND	—	—
E12	DDI2_PAIR2-	DDI2 Pair 2 -	DP-O	—	—

Pin	Signal	Description	Type	Termination	Comment
E13	DDI2_PAIR2+	DDI2 Pair 2 +	DP-O	—	—
E14	GND	Power Ground	PWR GND	—	—
E15	DDI2_PAIR3-	DDI2 Pair 3 -	DP-O	—	—
E16	DDI2_PAIR3+	DDI2 Pair 3 +	DP-O	—	—
E17	GND	Power Ground	PWR GND	—	—
E18	DDI2_DDC_AUX_SEL	DDI2 AUX function select	I-3.3	PD 1M	—
E19	DDI2_HPD	DDI2 Hot Plug Detect	I-3.3	PD 100k	—
E20	GND	Power Ground	PWR GND	—	—
E21	PCIe32_TX-	PCI Express Lane 32 Transmit - Group 2	O PCIe	—	—
E22	PCIe32_TX+	PCI Express Lane 32 Transmit + Group 2	O PCIe	—	—
E23	GND	Power Ground	PWR GND	—	—
E24	PCIe33_TX-	PCI Express Lane 33 Transmit - Group 2	O PCIe	—	—
E25	PCIe33_TX+	PCI Express Lane 33 Transmit + Group 2	O PCIe	—	—
E26	GND	Power Ground	PWR GND	—	—
E27	PCIe34_TX-	PCI Express Lane 34 Transmit - Group 2	O PCIe	—	—
E28	PCIe34_TX+	PCI Express Lane 34 Transmit + Group 2	O PCIe	—	—
E29	GND	Power Ground	PWR GND	—	—
E30	PCIe35_TX-	PCI Express Lane 35 Transmit - Group 2	O PCIe	—	—
E31	PCIe35_TX+	PCI Express Lane 35 Transmit + Group 2	O PCIe	—	—
E32	GND	Power Ground	PWR GND	—	—
E33	PCIe36_TX-	PCI Express Lane 36 Transmit - Group 2	O PCIe	—	—
E34	PCIe36_TX+	PCI Express Lane 36 Transmit + Group 2	O PCIe	—	—
E35	GND	Power Ground	PWR GND	—	—
E36	PCIe37_TX-	PCI Express Lane 37 Transmit - Group 2	O PCIe	—	—
E37	PCIe37_TX+	PCI Express Lane 37 Transmit + Group 2	O PCIe	—	—
E38	GND	Power Ground	PWR GND	—	—
E39	PCIe38_TX-	PCI Express Lane 38 Transmit - Group 2	O PCIe	—	—
E40	PCIe38_TX+	PCI Express Lane 38 Transmit + Group 2	O PCIe	—	—
E41	GND	Power Ground	PWR GND	—	—
E42	PCIe39_TX-	PCI Express Lane 39 Transmit - Group 2	O PCIe	—	—
E43	PCIe39_TX+	PCI Express Lane 39 Transmit + Group 2	O PCIe	—	—
E44	GND	Power Ground	PWR GND	—	—
E45	PCIe16_TX-	PCI Express Lane 16 Transmit - Group 1	O PCIe	—	—
E46	PCIe16_TX+	PCI Express Lane 16 Transmit + Group 1	O PCIe	—	—
E47	GND	Power Ground	PWR GND	—	—
E48	PCIe17_TX-	PCI Express Lane 17 Transmit - Group 1	O PCIe	—	—
E49	PCIe17_TX+	PCI Express Lane 17 Transmit + Group 1	O PCIe	—	—
E50	GND	Power Ground	PWR GND	—	—
E51	PCIe18_TX-	PCI Express Lane 18 Transmit - Group 1	O PCIe	—	—
E52	PCIe18_TX+	PCI Express Lane 18 Transmit + Group 1	O PCIe	—	—
E53	GND	Power Ground	PWR GND	—	—
E54	PCIe19_TX-	PCI Express Lane 19 Transmit - Group 1	O PCIe	—	—
E55	PCIe19_TX+	PCI Express Lane 19 Transmit + Group 1	O PCIe	—	—
E56	GND	Power Ground	PWR GND	—	—
E57	PCIe20_TX-	PCI Express Lane 20 Transmit - Group 1	O PCIe	—	—
E58	PCIe20_TX+	PCI Express Lane 20 Transmit + Group 1	O PCIe	—	—
E59	GND	Power Ground	PWR GND	—	—
E60	PCIe21_TX-	PCI Express Lane 21 Transmit - Group 1	O PCIe	—	—
E61	PCIe21_TX+	PCI Express Lane 21 Transmit + Group 1	O PCIe	—	—
E62	GND	Power Ground	PWR GND	—	—
E63	PCIe22_TX-	PCI Express Lane 22 Transmit - Group 1	O PCIe	—	—
E64	PCIe22_TX+	PCI Express Lane 22 Transmit + Group 1	O PCIe	—	—
E65	GND	Power Ground	PWR GND	—	—
E66	PCIe23_TX-	PCI Express Lane 23 Transmit - Group 1	O PCIe	—	—
E67	PCIe23_TX+	PCI Express Lane 23 Transmit + Group 1	O PCIe	—	—
E68	GND	Power Ground	PWR GND	—	—
E69	RSVD	Reserved Pin	—	NC	—
E70	RSVD	Reserved Pin	—	NC	—
E71	RSVD	Reserved Pin	—	NC	—
E72	RSVD	Reserved Pin	—	NC	—
E73	RSVD	Reserved Pin	—	NC	—

Pin	Signal	Description	Type	Termination	Comment
E74	RSVD	Reserved Pin	—	NC	—
E75	RSVD	Reserved Pin	—	NC	—
E76	RSVD	Reserved Pin	—	NC	—
E77	RSVD	Reserved Pin	—	NC	—
E78	NBASET1_CTREF	NBASE-T Ethernet Port 1 Reference voltage	0-3.3	—	—
E79	NBASET1_SDP	NBASE-T Ethernet Port 1 SDP	I/O-3.3	—	—
E80	NBASET1_LINK_MID#	NBASE-T Ethernet Port 1 MID speed Link indicator	0-3.3	—	—
E81	NBASET1_LINK_ACT#	NBASE-T Ethernet Port 1 controller activity indicator	0-3.3	—	—
E82	NBASET1_LINK_MAX#	NBASE-T Ethernet Port 1 MAX speed Link indicator	0-3.3	—	—
E83	GND	Power Ground	PWR GND	—	—
E84	RSVD	Reserved	—	NC	—
E85	RSVD	Reserved	—	NC	—
E86	GND	Power Ground	PWR GND	—	—
E87	ETH0_RX-	Ethernet KR Receive Port 0 -	I	NC	—
E88	ETH0_RX+	Ethernet KR Receive Port 0 +	I	NC	—
E89	GND	Power Ground	PWR GND	—	—
E90	ETH1_RX-	Ethernet KR Receive Port 1 -	I	NC	—
E91	ETH1_RX+	Ethernet KR Receive Port 1 +	I	NC	—
E92	GND	Power Ground	PWR GND	—	—
E93	PCIe_REFCLK1-	Reference clock PCIe Group 1 -	O LV_DIFF	—	—
E94	PCIe_REFCLK1+	Reference clock PCIe Group 1 +	O LV_DIFF	—	—
E95	GND	Power Ground	PWR GND	—	—
E96	PCIe_CLKREQ1#	PCIe Ref clock Group 1 request	I/O OD-3.3	PU 10k 3.3V (S5)	—
E97	PCIe_CLKREQ2#	PCIe Ref clock Group 2 request	I/O OD-3.3	PU 10k 3.3V (S5)	—
E98	PCIe_CLKREQ_OUT0#	PCIe Ref clock off-module device request	I/O OD-3.3	PU 10k 3.3V (S5)	—
E99	PCIe_CLKREQ_OUT1#	PCIe Ref clock off-module device request	I/O OD-3.3	PU 10k 3.3V (S5)	—
E100	PCIe_PERST_IN0#	Reset signals into Module to reset Module PCIe Targets	I-3.3	PD 100K	—

Table 41: Connector J2 Pins E1 - E100

4.4.2 Pins F1 - F100

Pin	Signal	Description	Type	Termination	Comment
F1	FUSA_STATUS0	FuSa two bit indication	0-3.3	NC	—
F2	FUSA_STATUS1	FuSa two bit indication	0-3.3	NC	—
F3	FUSA_ALERT#	Error occurrence on module	I-3.3	NC	—
F4	FUSA_SPI_CS#	FuSa Chip select	I-3.3	NC	—
F5	FUSA_SPI_CLK	FuSa Clock signal	I-3.3	NC	—
F6	FUSA_SPI_MISO	FuSa Master in Slave out	0-3.3	NC	—
F7	FUSA_SPI_MOSI	FuSa Master out Slave in	I-3.3	NC	—
F8	FUSA_SPI_ALERT	FuSa SPI data available	0-3.3	NC	—
F9	FUSA_VOLTAGE_ERR#	FuSa Over-/Undervoltage/current	0-3.3	NC	—
F10	PROCHOT#	Temperature excursion event	0-3.3	PU 10K 3.3V (S5)	—
F11	CATERR#	Catastrophic error event	0-3.3	PU 10K 3.3V (S5)	—
F12	RSVD	Reserved Pin	—	NC	—
F13	RSVD	Reserved Pin	—	NC	—
F14	RSVD	Reserved Pin	—	NC	—
F15	RSVD	Reserved Pin	—	NC	—
F16	RSVD	Reserved Pin	—	NC	—
F17	RSVD	Reserved Pin	—	NC	—
F18	RSVD	Reserved Pin	—	NC	—
F19	GND	Power Ground	PWR GND	—	—
F20	PCIe32_RX-	PCI Express Lane 32 Receive - Group 2 I	PCIe	—	—
F21	PCIe32_RX+	PCI Express Lane 32 Receive + Group 2 I	PCIe	—	—
F22	GND	Power Ground	PWR GND	—	—
F23	PCIe33_RX-	PCI Express Lane 33 Receive - Group 2 I	PCIe	—	—
F24	PCIe33_RX+	PCI Express Lane 33 Receive + Group 2 I	PCIe	—	—
F25	GND	Power Ground	PWR GND	—	—
F26	PCIe34_RX-	PCI Express Lane 34 Receive - Group 2 I	PCIe	—	—
F27	PCIe34_RX+	PCI Express Lane 34 Receive + Group 2 I	PCIe	—	—

Pin	Signal	Description	Type	Termination	Comment
F28	GND	Power Ground	PWR GND	—	—
F29	PCle35_RX-	PCI Express Lane 35 Receive - Group 2 I	PCle	—	—
F30	PCle35_RX+	PCI Express Lane 35 Receive + Group 2 I	PCle	—	—
F31	GND	Power Ground	PWR GND	—	—
F32	PCle36_RX-	PCI Express Lane 36 Receive - Group 2 I	PCle	—	—
F33	PCle36_RX+	PCI Express Lane 36 Receive + Group 2 I	PCle	—	—
F34	GND	Power Ground	PWR GND	—	—
F35	PCle37_RX-	PCI Express Lane 37 Receive - Group 2 I	PCle	—	—
F36	PCle37_RX+	PCI Express Lane 37 Receive + Group 2 I	PCle	—	—
F37	GND	Power Ground	PWR GND	—	—
F38	PCle38_RX-	PCI Express Lane 38 Receive - Group 2 I	PCle	—	—
F39	PCle38_RX+	PCI Express Lane 38 Receive + Group 2 I	PCle	—	—
F40	GND	Power Ground	PWR GND	—	—
F41	PCle39_RX-	PCI Express Lane 39 Receive - Group 2 I	PCle	—	—
F42	PCle39_RX+	PCI Express Lane 39 Receive + Group 2 I	PCle	—	—
F43	GND	Power Ground	PWR GND	—	—
F44	PCle16_RX-	PCI Express Lane 16 Receive - Group 1 I	PCle	—	—
F45	PCle16_RX+	PCI Express Lane 16 Receive + Group 1 I	PCle	—	—
F46	GND	Power Ground	PWR GND	—	—
F47	PCle17_RX-	PCI Express Lane 17 Receive - Group 1 I	PCle	—	—
F48	PCle17_RX+	PCI Express Lane 17 Receive + Group 1 I	PCle	—	—
F49	GND	Power Ground	PWR GND	—	—
F50	PCle18_RX-	PCI Express Lane 18 Receive - Group 1 I	PCle	—	—
F51	PCle18_RX+	PCI Express Lane 18 Receive + Group 1 I	PCle	—	—
F52	GND	Power Ground	PWR GND	—	—
F53	PCle19_RX-	PCI Express Lane 19 Receive - Group 1 I	PCle	—	—
F54	PCle19_RX+	PCI Express Lane 19 Receive + Group 1 I	PCle	—	—
F55	GND	Power Ground	PWR GND	—	—
F56	PCle20_RX-	PCI Express Lane 20 Receive - Group 1 I	PCle	—	—
F57	PCle20_RX+	PCI Express Lane 20 Receive + Group 1 I	PCle	—	—
F58	GND	Power Ground	PWR GND	—	—
F59	PCle21_RX-	PCI Express Lane 21 Receive - Group 1 I	PCle	—	—
F60	PCle21_RX+	PCI Express Lane 21 Receive + Group 1 I	PCle	—	—
F61	GND	Power Ground	PWR GND	—	—
F62	PCle22_RX-	PCI Express Lane 22 Receive - Group 1 I	PCle	—	—
F63	PCle22_RX+	PCI Express Lane 22 Receive + Group 1 I	PCle	—	—
F64	GND	Power Ground	PWR GND	—	—
F65	PCle23_RX-	PCI Express Lane 23 Receive - Group 1 I	PCle	—	—
F66	PCle23_RX+	PCI Express Lane 23 Receive + Group 1 I	PCle	—	—
F67	GND	Power Ground	PWR GND	—	—
F68	RSVD	Reserved Pin	—	NC	—
F69	RSVD	Reserved Pin	—	NC	—
F70	GND	Power Ground	PWR GND	—	—
F71	NBASET1_MDI0-	NBASE-T Ethernet Port 1 MDI Pair 0 -	I/O-3.3	—	—
F72	NBASET1_MDI0+	NBASE-T Ethernet Port 1 MDI Pair 0 +	I/O-3.3	—	—
F73	GND	Power Ground	PWR GND	—	—
F74	NBASET1_MDI1-	NBASE-T Ethernet Port 1 MDI Pair 1 -	I/O-3.3	—	—
F75	NBASET1_MDI1+	NBASE-T Ethernet Port 1 MDI Pair 1 +	I/O-3.3	—	—
F76	GND	Power Ground	PWR GND	—	—
F77	NBASET1_MDI2-	NBASE-T Ethernet Port 1 MDI Pair 2 -	I/O-3.3	—	—
F78	NBASET1_MDI2+	NBASE-T Ethernet Port 1 MDI Pair 2 +	I/O-3.3	—	—
F79	GND	Power Ground	PWR GND	—	—
F80	NBASET1_MDI3-	NBASE-T Ethernet Port 1 MDI Pair 3 -	I/O-3.3	—	—
F81	NBASET1_MDI3+	NBASE-T Ethernet Port 1 MDI Pair 3 +	I/O-3.3	—	—
F82	GND	Power Ground	PWR GND	—	—
F83	RSVD	Reserved Pin	—	NC	—
F84	RSVD	Reserved Pin	—	NC	—
F85	GND	Power Ground	PWR GND	—	—
F86	ETH0_TX-	Ethernet KR Transmit Port 0 -	O	NC	—
F87	ETH0_TX+	Ethernet KR Transmit Port 0 +	O	NC	—
F88	GND	Power Ground	PWR GND	—	—

Pin	Signal	Description	Type	Termination	Comment
F89	ETH1_TX-	Ethernet KR Transmit Port 1 -	O	NC	—
F90	ETH1_TX+	Ethernet KR Transmit Port 1 +	O	NC	—
F91	GND	Power Ground	PWR GND	—	—
F92	PCIe_REFCLK2-	Reference clock PCIe Group 2 -	O LV_DIFF	—	—
F93	PCIe_REFCLK2+	Reference clock PCIe Group 2 +	O LV_DIFF	—	—
F94	GND	Power Ground	PWR GND	—	—
F95	RSVD	Reserved Pin	—	NC	—
F96	ETH0-1_PRSNT#	Ethernet 0/1 Present	I-3.3	PD 100K	—
F97	ETH0-1_PHY_RST#	Ethernet PHY reset signal	O-3.3	PD 100K	—
F98	ETH0_SDP	Ethernet 0 SDP	I/O-3.3	NC	—
F99	ETH1_SDP	Ethernet 1 SDP	I/O-3.3	NC	—
F100	PCIe_PERST_IN1#	Reset signals into Module to reset Module PCIe Targets	I-3.3	PD 100K	—

Table 42: Connector J2 Pins F1 - F100

4.4.3 Pins G1 - G100

Pin	Signal	Description	Type	Termination	Comment
G1	RSVD	Reserved	—	—	—
G2	GND	Power Ground	PWR GND	—	—
G3	USB2_SSRX0-	USB Super Speed Pair 2 Receive 0 -	I USB SS	—	—
G4	USB2_SSRX0+	USB Super Speed Pair 2 Receive 0 +	I USB SS	—	—
G5	GND	Power Ground	PWR GND	—	—
G6	USB2_SSRX1-	USB Super Speed Pair 2 Receive 1 -	I USB SS	—	—
G7	USB2_SSRX1+	USB Super Speed Pair 2 Receive 1 +	I USB SS	—	—
G8	GND	Power Ground	PWR GND	—	—
G9	USB3_SSRX0-	USB Super Speed Pair 3 Receive 0 -	I USB SS	—	—
G10	USB3_SSRX0+	USB Super Speed Pair 3 Receive 0 +	I USB SS	—	—
G11	GND	Power Ground	PWR GND	—	—
G12	USB3_SSRX1-	USB Super Speed Pair 3 Receive 1 -	I USB SS	—	—
G13	USB3_SSRX1+	USB Super Speed Pair 3 Receive 1 +	I USB SS	—	—
G14	GND	Power Ground	PWR GND	—	—
G15	USB3_LSRX	USB 4 Receive channel 3	I-3.3	PD 100K	—
G16	USB3_LSTX	USB 4 Transmit channel 3	O-3.3	PD 100K	—
G17	USB2_LSRX	USB 4 Receive channel 2	I-3.3	PD 100K	—
G18	USB2_LSTX	USB 4 Transmit channel 2	O-3.3	PD 100K	—
G19	PEG_LANE_REV#	PEG lane reversal input strap	I-open/GND	PU 100k 3.3V (S5)	—
G20	GND	Power Ground	PWR GND	—	—
G21	PCIe40_RX-	PCI Express Lane 40 Receive - Group 2	I PCIe	NC	—
G22	PCIe40_RX+	PCI Express Lane 40 Receive + Group 2	I PCIe	NC	—
G23	GND	Power Ground	PWR GND	—	—
G24	PCIe41_RX-	PCI Express Lane 41 Receive - Group 2	I PCIe	NC	—
G25	PCIe41_RX+	PCI Express Lane 41 Receive + Group 2	I PCIe	NC	—
G26	GND	Power Ground	PWR GND	—	—
G27	PCIe42_RX-	PCI Express Lane 42 Receive - Group 2	I PCIe	NC	—
G28	PCIe42_RX+	PCI Express Lane 42 Receive + Group 2	I PCIe	NC	—
G29	GND	Power Ground	PWR GND	—	—
G30	PCIe43_RX-	PCI Express Lane 43 Receive - Group 2	I PCIe	NC	—
G31	PCIe43_RX+	PCI Express Lane 43 Receive + Group 2	I PCIe	NC	—
G32	GND	Power Ground	PWR GND	—	—
G33	PCIe44_RX-	PCI Express Lane 44 Receive - Group 2	I PCIe	NC	—
G34	PCIe44_RX+	PCI Express Lane 44 Receive + Group 2	I PCIe	NC	—
G35	GND	Power Ground	PWR GND	—	—
G36	PCIe45_RX-	PCI Express Lane 45 Receive - Group 2	I PCIe	NC	—
G37	PCIe45_RX+	PCI Express Lane 45 Receive + Group 2	I PCIe	NC	—
G38	GND	Power Ground	PWR GND	—	—
G39	PCIe46_RX-	PCI Express Lane 46 Receive - Group 2	I PCIe	NC	—
G40	PCIe46_RX+	PCI Express Lane 46 Receive + Group 2	I PCIe	NC	—
G41	GND	Power Ground	PWR GND	—	—
G42	PCIe47_RX-	PCI Express Lane 47 Receive - Group 2	I PCIe	NC	—

Pin	Signal	Description	Type	Termination	Comment
G43	PCIe47_RX+	PCI Express Lane 47 Receive + Group 2	I PCIe	NC	—
G44	GND	Power Ground	PWR GND	—	—
G45	PCIe24_RX-	PCI Express Lane 24 Receive - Group 1	I PCIe	—	—
G46	PCIe24_RX+	PCI Express Lane 24 Receive + Group 1	I PCIe	—	—
G47	GND	Power Ground	PWR GND	—	—
G48	PCIe25_RX-	PCI Express Lane 25 Receive - Group 1	I PCIe	—	—
G49	PCIe25_RX+	PCI Express Lane 25 Receive + Group 1	I PCIe	—	—
G50	GND	Power Ground	PWR GND	—	—
G51	PCIe26_RX-	PCI Express Lane 26 Receive - Group 1	I PCIe	—	—
G52	PCIe26_RX+	PCI Express Lane 26 Receive + Group 1	I PCIe	—	—
G53	GND	Power Ground	PWR GND	—	—
G54	PCIe27_RX-	PCI Express Lane 27 Receive - Group 1	I PCIe	—	—
G55	PCIe27_RX+	PCI Express Lane 27 Receive + Group 1	I PCIe	—	—
G56	GND	Power Ground	PWR GND	—	—
G57	PCIe28_RX-	PCI Express Lane 28 Receive - Group 1	I PCIe	—	—
G58	PCIe28_RX+	PCI Express Lane 28 Receive + Group 1	I PCIe	—	—
G59	GND	Power Ground	PWR GND	—	—
G60	PCIe29_RX-	PCI Express Lane 29 Receive - Group 1	I PCIe	—	—
G61	PCIe29_RX+	PCI Express Lane 29 Receive + Group 1	I PCIe	—	—
G62	GND	Power Ground	PWR GND	—	—
G63	PCIe30_RX-	PCI Express Lane 30 Receive - Group 1	I PCIe	—	—
G64	PCIe30_RX+	PCI Express Lane 30 Receive + Group 1	I PCIe	—	—
G65	GND	Power Ground	PWR GND	—	—
G66	PCIe31_RX-	PCI Express Lane 31 Receive - Group 1	I PCIe	—	—
G67	PCIe31_RX+	PCI Express Lane 31 Receive + Group 1	I PCIe	—	—
G68	GND	Power Ground	PWR GND	—	—
G69	RSVD	Reserved	—	NC	—
G70	RSVD	Reserved	—	NC	—
G71	GND	Power Ground	PWR GND	—	—
G72	CSI0_RX0-	CSI0 Pair 0 Receive -	I-1.2	NC	—
G73	CSI0_RX0+	CSI0 Pair 0 Receive +	I-1.2	NC	—
G74	GND	Power Ground	PWR GND	—	—
G75	CSI0_RX1-	CSI0 Pair 1 Receive -	I-1.2	NC	—
G76	CSI0_RX1+	CSI0 Pair 1 Receive +	I-1.2	NC	—
G77	GND	Power Ground	PWR GND	—	—
G78	CSI0_RX2-	CSI0 Pair 2 Receive -	I-1.2	NC	—
G79	CSI0_RX2+	CSI0 Pair 2 Receive +	I-1.2	NC	—
G80	GND	Power Ground	PWR GND	—	—
G81	CSI0_RX3-	CSI0 Pair 3 Receive -	I-1.2	NC	—
G82	CSI0_RX3+	CSI0 Pair 3 Receive +	I-1.2	NC	—
G83	GND	Power Ground	PWR GND	—	—
G84	CSI0_CLK-	CSI0 Clock input -	I-1.2	NC	—
G85	CSI0_CLK+	CSI0 Clock input +	I-1.2	NC	—
G86	GND	Power Ground	PWR GND	—	—
G87	CSI0_I2C_CLK	CSI-2 Mode: I2C Clock line	O-1.8	NC	—
G88	CSI0_I2C_DAT	CSI-2 Mode: I2C Data line	I/O-1.8	NC	—
G89	CSI0_MCLK	CSI Master Clock for CSI0	O-1.8	NC	—
G90	CSI0_RST#	CSI0 Reset signal	O-1.8	NC	—
G91	CSI0_ENA	CSI0 Enable signal	O-1.8	NC	—
G92	GND	Power Ground	PWR GND	—	—
G93	RSVD	Reserved	—	NC	—
G94	RSVD	Reserved	—	NC	—
G95	GND	Power Ground	PWR GND	—	—
G96	ETH0-1_I2C_CLK	ETH 0-1 I2C clock signal	I/O OD-3.3	NC	—
G97	ETH0-1_I2C_DAT	ETH 0-1 I2C data signal	I/O OD-3.3	NC	—
G98	ETH0-1_PHY_INT#	Active low interrupt signal from ETH ports 0- 1	I-3.3	NC	—
G99	ETH0-1_INT#	Active low interrupt signal from IO Port expanders for ETH	I-3.3	NC	—
G100	PCIe_WAKE_OUT0#	PCIe wake request signal	OD-3.3	NC	—

Table 43: Connector J2 - Pins G1 - G100

4.4.4 Pins H1 - H100

Pin	Signal	Description	Type	Termination	Comment
H1	GND	Power Ground	PWR_GND	—	—
H2	USB2_SSTX0-	USB Super Speed Pair 2 Transmit 0 - O	USB SS	—	—
H3	USB2_SSTX0+	USB Super Speed Pair 2 Transmit 0 + O	USB SS	—	—
H4	GND	Power Ground	PWR_GND	—	—
H5	USB2_SSTX1-	USB Super Speed Pair 2 Transmit 1 - O	USB SS	—	—
H6	USB2_SSTX1+	USB Super Speed Pair 2 Transmit 1 + O	USB SS	—	—
H7	GND	Power Ground	PWR_GND	—	—
H8	USB3_SSTX0-	USB Super Speed Pair 3 Transmit 0 - O	USB SS	—	—
H9	USB3_SSTX0+	USB Super Speed Pair 3 Transmit 0 + O	USB SS	—	—
H10	GND	Power Ground	PWR_GND	—	—
H11	USB3_SSTX1-	USB Super Speed Pair 3 Transmit 1 - O	USB SS	—	—
H12	USB3_SSTX1+	USB Super Speed Pair 3 Transmit 1 + O	USB SS	—	—
H13	GND	Power Ground	PWR_GND	—	—
H14	USB2_AUX-	USB4 DP Aux channel 2 -	LV_Diff	NC	—
H15	USB2_AUX+	USB4 DP Aux channel 2 -	LV_Diff	NC	—
H16	GND	Power Ground	PWR_GND	—	—
H17	USB3_AUX-	USB4 DP Aux channel 3 -	LV_Diff	NC	—
H18	USB3_AUX+	USB4 DP Aux channel 3 -	LV_Diff	NC	—
H19	GND	Power Ground	PWR_GND	—	—
H20	PCIe40_TX-	PCI Express Lane 40 Transmit - Group 2 O	PCIe	NC	—
H21	PCIe40_TX+	PCI Express Lane 40 Transmit + Group 2 O	PCIe	NC	—
H22	GND	Power Ground	PWR_GND	—	—
H23	PCIe41_TX-	PCI Express Lane 41 Transmit - Group 2 O	PCIe	NC	—
H24	PCIe41_TX+	PCI Express Lane 41 Transmit + Group 2 O	PCIe	NC	—
H25	GND	Power Ground	PWR_GND	—	—
H26	PCIe42_TX-	PCI Express Lane 42 Transmit - Group 2 O	PCIe	NC	—
H27	PCIe42_TX+	PCI Express Lane 42 Transmit + Group 2 O	PCIe	NC	—
H28	GND	Power Ground	PWR_GND	—	—
H29	PCIe43_TX-	PCI Express Lane 43 Transmit - Group 2 O	PCIe	NC	—
H30	PCIe43_TX+	PCI Express Lane 43 Transmit + Group 2 O	PCIe	NC	—
H31	GND	Power Ground	PWR_GND	—	—
H32	PCIe44_TX-	PCI Express Lane 44 Transmit - Group 2 O	PCIe	NC	—
H33	PCIe44_TX+	PCI Express Lane 44 Transmit + Group 2 O	PCIe	NC	—
H34	GND	Power Ground	PWR_GND	—	—
H35	PCIe45_TX-	PCI Express Lane 45 Transmit - Group 2 O	PCIe	NC	—
H36	PCIe45_TX+	PCI Express Lane 45 Transmit + Group 2 O	PCIe	NC	—
H37	GND	Power Ground	PWR_GND	—	—
H38	PCIe46_TX-	PCI Express Lane 46 Transmit - Group 2 O	PCIe	NC	—
H39	PCIe46_TX+	PCI Express Lane 46 Transmit + Group 2 O	PCIe	NC	—
H40	GND	Power Ground	PWR_GND	—	—
H41	PCIe47_TX-	PCI Express Lane 47 Transmit - Group 2 O	PCIe	NC	—
H42	PCIe47_TX+	PCI Express Lane 47 Transmit + Group 2 O	PCIe	NC	—
H43	GND	Power Ground	PWR_GND	—	—
H44	PCIe24_TX-	PCI Express Lane 24 Transmit - Group 1 O	PCIe	—	—
H45	PCIe24_TX+	PCI Express Lane 24 Transmit + Group 1 O	PCIe	—	—
H46	GND	Power Ground	PWR_GND	—	—
H47	PCIe25_TX-	PCI Express Lane 25 Transmit - Group 1 O	PCIe	—	—
H48	PCIe25_TX+	PCI Express Lane 25 Transmit + Group 1 O	PCIe	—	—
H49	GND	Power Ground	PWR_GND	—	—
H50	PCIe26_TX-	PCI Express Lane 26 Transmit - Group 1 O	PCIe	—	—
H51	PCIe26_TX+	PCI Express Lane 26 Transmit + Group 1 O	PCIe	—	—
H52	GND	Power Ground	PWR_GND	—	—
H53	PCIe27_TX-	PCI Express Lane 27 Transmit - Group 1 O	PCIe	—	—
H54	PCIe27_TX+	PCI Express Lane 27 Transmit + Group 1 O	PCIe	—	—
H55	GND	Power Ground	PWR_GND	—	—
H56	PCIe28_TX-	PCI Express Lane 28 Transmit - Group 1 O	PCIe	—	—
H57	PCIe28_TX+	PCI Express Lane 28 Transmit + Group 1 O	PCIe	—	—
H58	GND	Power Ground	PWR_GND	—	—
H59	PCIe29_TX-	PCI Express Lane 29 Transmit - Group 1 O	PCIe	—	—

Pin	Signal	Description	Type	Termination	Comment
H60	PCIe29_TX+	PCI Express Lane 29 Transmit + Group 1 0	PCIe	—	—
H61	GND	Power Ground	PWR GND	—	—
H62	PCIe30_TX-	PCI Express Lane 30 Transmit - Group 1 0	PCIe	—	—
H63	PCIe30_TX+	PCI Express Lane 30 Transmit + Group 1 0	PCIe	—	—
H64	GND	Power Ground	PWR GND	—	—
H65	PCIe31_TX-	PCI Express Lane 31 Transmit - Group 1 0	PCIe	—	—
H66	PCIe31_TX+	PCI Express Lane 31 Transmit + Group 1 0	PCIe	—	—
H67	GND	Power Ground	PWR GND	—	—
H68	RSVD	Reserved	—	NC	—
H69	RSVD	Reserved	—	NC	—
H70	GND	Power Ground	PWR GND	—	—
H71	CSI1_RX0-	CSI1 Pair 0 Receive -	I-1.2	NC	—
H72	CSI1_RX0+	CSI1 Pair 0 Receive +	I-1.2	NC	—
H73	GND	Power Ground	PWR GND	—	—
H74	CSI1_RX1-	CSI1 Pair 1 Receive -	I-1.2	NC	—
H75	CSI1_RX1+	CSI1 Pair 1 Receive +	I-1.2	NC	—
H76	GND	Power Ground	PWR GND	—	—
H77	CSI1_RX2-	CSI1 Pair 2 Receive -	I-1.2	NC	—
H78	CSI1_RX2+	CSI1 Pair 2 Receive +	I-1.2	NC	—
H79	GND	Power Ground	PWR GND	—	—
H80	CSI1_RX3-	CSI1 Pair 3 Receive -	I-1.2	NC	—
H81	CSI1_RX3+	CSI1 Pair 3 Receive +	I-1.2	NC	—
H82	GND	Power Ground	PWR GND	—	—
H83	CSI1_CLK-	CSI1 Clock input -	I-1.2	NC	—
H84	CSI1_CLK+	CSI1 Clock input +	I-1.2	NC	—
H85	GND	Power Ground	PWR GND	—	—
H86	CSI1_I2C_CLK	CSI-2 Mode: I2C Clock line	O-1.8	NC	—
H87	CSI1_I2C_DAT	CSI-2 Mode: I2C Data line	I/O-1.8	NC	—
H88	CSI1_MCLK	CSI Master Clock for CSI1	O-1.8	NC	—
H89	CSI1_RST#	CSI0 Reset signal	O-1.8	NC	—
H90	CSI1_ENA	CSI0 Enable signal	O-1.8	NC	—
H91	GND	Power Ground	PWR GND	—	—
H92	PCIe_REFCLKIN0-	PCIe reference clock input 0 -	I-3.3	NC	—
H93	PCIe_REFCLKIN0+	PCIe reference clock input 0 +	I-3.3	NC	—
H94	GND	Power Ground	PWR GND	—	—
H95	PCIe_REFCLKIN1-	PCIe reference clock input 1 -	I-3.3	NC	—
H96	PCIe_REFCLKIN1+	PCIe reference clock input 1 +	I-3.3	NC	—
H97	GND	Power Ground	PWR GND	—	—
H98	ETH0-1_MDIO_CLK	ETH 0-1 clock signal for Management Data I/O interface	O-3.3	NC	—
H99	ETH0-1_MDIO_DAT	ETH 0-1 Management Data I/O interface mode	O-3.3	NC	—
H100	PCIe_WAKE_OUT1#	PCIe wake request signal	OD-3.3	NC	—

Table 44: Connector J2 - Pins H1 - H100

5. UEFI BIOS

5.1 Starting the UEFI BIOS

The COMh-ccAS uses a Kontron-customized, pre-installed and configured version of AMI Aptio® V BIOS based on the Unified Extensible Firmware Interface (UEFI) specification and the Intel® Platform Innovation Framework for EFI.

The UEFI BIOS provides a variety of new and enhanced functions specifically tailored to the hardware features of the COMh-ccAS.



This chapter provides an overview of the BIOS and its setup. A more detailed listing and description of all BIOS setup nodes can be found in the BIOS file package available on our [Customer Section](#). Please register there to get access to BIOS downloads and Product Change Notifications.

The UEFI BIOS comes with a Setup program that provides quick and easy access to the individual function settings for control or modification of the default configuration. The Setup program allows access to various menus resp. sub-menus that provide the specific functions.

To start the UEFI BIOS Setup program, follow the steps below:

1. Power on the board
2. Wait until the first characters appear on the screen (POST messages or splash screen)
3. Press the key
4. If the UEFI BIOS is password-protected, a request for password will appear. Enter either the User Password or the Supervisor Password
5. The Setup menu appears

5.2 Navigating the UEFI BIOS

The COMh-ccAS UEFI BIOS Setup program uses a hot key navigation system with a corresponding legend bar displayed on the setup screens. The following table provides a list of navigation hot keys available in the legend bar.

Hot Key	Description
<F1>	<F1> key invokes the General Help window
←	<Minus> key selects the next lower value within a field
<+>	<Plus> key selects the next higher value within a field
<F2>	<F2> key loads previous values
<F3>	<F3> key loads optimized defaults
<F4>	<F4> key Saves and Exits
<←> or <→>	<Left/Right> arrows select major Setup menus on menu bar, for example, Main or Advanced
<↑> or <↓>	<Up/Down> arrows select fields in the current menu, for example, Setup function or sub-screen
<ESC>	<ESC> key exits a major Setup menu and enters the Exit Setup menu. Pressing the <ESC> key in a sub-menu displays the next higher menu level
<RETURN>	<RETURN> key executes a command or selects a sub-menu

Table 45: Navigation Hot Keys Available in the Legend Bar

5.3 Setup Menus

The Setup utility features a selection bar at the top of the screen that lists the menus

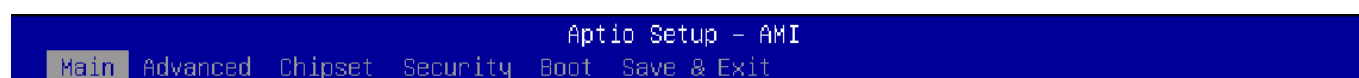


Figure 9: Setup Menu Selection Bar

The Setup menus available for the COMh-ccAS are:

- Main
- Advanced
- Chipset
- Security
- Boot
- Save & Exit

The currently active menu is highlighted in grey, the currently active UEFI BIOS Setup item in white. Use the left and right arrow keys to select the Setup menu.

Each Setup menu provides two main frames. The left frame displays all available functions and configurable ones are displayed in blue. Functions displayed in grey provide information about the status or the operational configuration.

5.4 Getting Help

The right frame displays a help window. The help window provides an explanation of the respective function.

5.5 UEFI Shell

The Kontron UEFI BIOS features a built-in and enhanced version of the UEFI Shell. For a detailed description of the available standard shell scripting, refer to the EFI Shell User Guide. For a detailed description of the available standard shell commands, refer to the EFI Shell Command Manual. Both documents can be downloaded from the EFI and Framework Open Source Community homepage: <http://sourceforge.net/projects/efi-shell/files/documents/>.



Kontron UEFI BIOS does not provide all shell commands described in the EFI Shell Command Manual.

5.5.1 Entering the UEFI Shell

To enter the UEFI Shell, follow the steps below:

1. Power on the board
2. Press the <F7> key (instead of) to display a choice of boot devices
3. Select 'UEFI: Built-in EFI shell'

```
UEFI Interactive Shell v2.2
EDK II / Kontron add-on v0.3
UEFI v2.80 (American Megatrends, 0x0005001A)
map: No mapping found.
```

1. Press the <ESC> key within 5 seconds to skip startup.nsh or any other key to continue
2. The output produced by the device-mapping table can vary depending on the board's configuration
3. If the <ESC> key is pressed before the 5 second timeout elapses, the shell prompt is shown:

```
Shell>
```

5.5.2 Exiting the UEFI Shell

To exit the UEFI Shell, follow one of the steps below:

- Use the **exit** UEFI Shell command to select the boot device, in the Boot menu, that the OS boots from
- Reset the board using the **reset** UEFI Shell command
- Press the reset button of the board or power down/up the board

5.6 UEFI Shell Scripting

5.6.1 Startup Scripting

If the <ESC> key is not pressed and the timeout has run out, then the UEFI Shell automatically tries to execute some startup scripts. The UEFI shell searches for scripts and executes them in the following order:

1. Initially searches for Kontron flash-stored startup script
2. If there is no Kontron flash-stored startup script present, then the UEFI-specified **startup.nsh** script is used. This script must be located on the root of any of the attached FAT-formatted disk drives
3. If none of the startup scripts are present or the startup script terminates then the default boot order is continued

5.6.2 Create a Startup Script

Startup scripts can be created using the UEFI Shell built-in editor **edit** or under any OS with a plain text editor of your choice.

5.6.3 Example of Startup Scripts

Execute Shell Script on other Harddrive

This example (**startup.nsh**) executes the shell script named **bootme.nsh** located in the root of the first detected disk drive (**fs0**).

```
fs0:  
bootme.nsh
```

5.7 Firmware Update

Firmware updates are typically delivered as a ZIP archive. Please find the latest available BIOS-ZIP archive on [Kontron's Customer Section](#). Further information about the firmware update procedure can be found in the included "flash_instruction.txt"-file.



Register to [Kontron's Customer Section](#) to get access to BIOS downloads, additional documentation and Product Change Notification service.

6. Technical Support

For technical support contact our Support Department:

E-Mail: support@kontron.com

Phone: +49 (0) 821 4086-888

Make sure you have the following information available when you call:

- Product ID Number (PN)
- Serial Number (SN)
- Module's revision
- Operating System and Kernel/Build version
- Software modifications
- Additional connected hardware/full description of hardware set up



The Serial Number can be found on the Type Label, located on the product.

Be ready to explain the nature of your problem to the service technician.

6.1 Warranty

Due to their limited service life, parts that by their nature are subject to a particularly high degree of wear (wearing parts) are excluded from the warranty beyond that provided by law.



If there is a protection label on your product, then the warranty is lost if the product is opened.

6.2 Returning Defective Material

All equipment returned to Kontron must have a Return of Material Authorization (RMA) number assigned exclusively by Kontron. Kontron cannot be held responsible for any loss or damage caused to the equipment received without an RMA number. The buyer accepts responsibility for all freight charges for the return of goods to Kontron's designated facility. Kontron will pay the return freight charges back to the buyer's location in the event that the equipment is repaired or replaced within the stipulated warranty period. Follow these steps before returning any product to Kontron:

1. Visit the RMA Information website: [RMA Information - Kontron Europe and Asia](#)
2. Download the RMA Request sheet for **Kontron Europe GmbH** and fill out the form. Take care to include a short detailed description of the observed problem or failure and to include the

product identification information (Name of product, Product Number and Serial Number). If a delivery includes more than one product, fill out the above information in the RMA Request form for each product.

3. Send the completed RMA-Request form to the fax or email address given below at Kontron Europe GmbH.
Kontron will provide an RMA-Number.

Kontron Europe GmbH
RMA Support
Phone: +49 (0) 821 4086-0
Fax: +49 (0) 821 4086-111
Email: service@kontron.com

4. The goods for repair must be packed properly for shipping, considering shock and ESD protection.



Goods returned to Kontron Europe GmbH in non-proper packaging will be considered as customer caused faults and cannot be accepted as warranty repairs.

5. Include the RMA-Number with the shipping paperwork and send the product to the delivery address provided in the RMA form or received from Kontron RMA Support.

7. Document Revision

The following table shows the revision of this document.

Revision	Author	Date	Comment
0.1	UMA	2023-01-30	initial preliminary release
0.2	UMA	2023-03-01	small updates after review
0.3	UMA	2023-07-07	added 13th gen Intel Corel CPUs, removed Soundwire

Table 46: Document Revision Table