

FLATCLIENT MAR



- ▶ DNVGL / EN 60945 / IACS E10
- ▶ Salt spray tested acc. EN 60068-2-52
- ▶ Robust and reliable



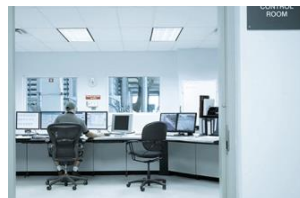
- ▶ 10.1" ... 21.5"
- ▶ Intel Atom® or Intel® Core™ CPU
- ▶ Panel-mount (built-in)



FLATCLIENT - SOLUTION PLATFORM



FlatClient HYG / FlatView HYG
FlatClient STS / FlatView STS



FlatClient CTR / FlatView CTR
FlatClient with narrow frame

FlatClient RCK / FlatView RCK



FlatClient MAR

FLATCLIENT MAR – APPLICATIONS

Maritime environment

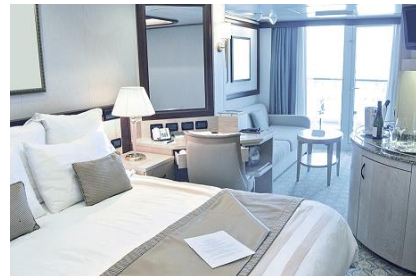
Bridge



Machine room



Accommodation





Certificate No:
TAA0002VX

TYPE APPROVAL CERTIFICATE

This is to certify:
That the Peripheral Equipment

with type designation(s)
FlatClient MAR

Issued to
Kontron Europe GmbH
Augsburg, Bayern, Germany

is found to comply with
DNV GL rules for classification – Ships, offshore units, and high speed and light craft

Application :
Product(s) approved by this certificate is/are accepted for installation on all vessels classed by DNV GL.

Location classes:

Temperature **B**
 Humidity **B**
 Vibration **A**
 EMC **B**
 Enclosure **A (IP44-Front side)**

Issued at **Hamburg** on **2020-11-09**

This Certificate is valid until **2025-11-08**.
 DNV GL local station: **Augsburg**

Approval Engineer: **Holger Jansen**



 for **DNV GL**
 Digital Signature:
 Papanuskas, Joannis
Joannis Papanuskas
 Head of Section



FLATCLIENT MAR - HIGHLIGHTS



- ▶ DNVGL approved / EN 60945 / IACS E10
- ▶ Super-low illumination dimming
- ▶ Remote backlight control
- ▶ Scalable performance
- ▶ Flexible connectivity (ETH, USB, COM, CAN, ...)
- ▶ Up to IP65
- ▶ Salt spray acc. to EN 60068-2-52
- ▶ Designed, built and supported in Germany

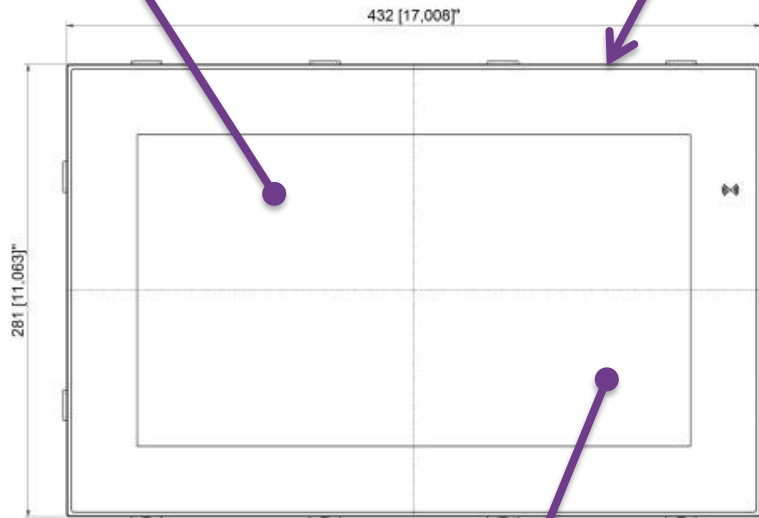
Requirement	Rating
Temperature	B
Humidity	B
Vibration	A
EMC	B
Enclosure	A

FLATCLIENT MAR - HIGHLIGHTS



Dimming

From 0 to 100%, remote controlled

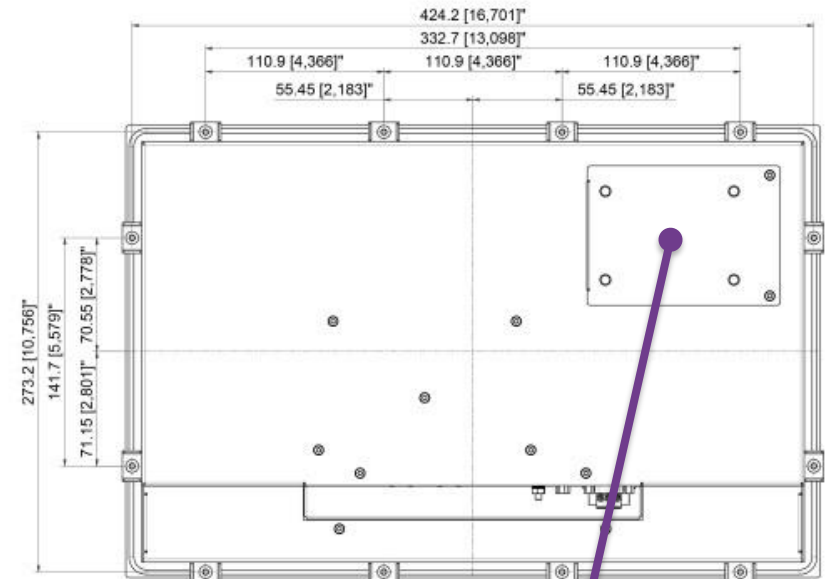


Edge protection



All-flat front

Total flush glass front



Anti-glare surface

Super-resistant glass surface with best readability and anti-fingerprint

Metal housing

Maintenance door

Access to RTC-battery and 2,5" SSD*

*Option

FLATCLIENT MAR - CONFIGURATION



Size	10.1"	12.1"	15.6"	18.5"	21.5"
Resolution	1280x800	1280x800	1920x1080	1920x1080	1920x1080
Front	PCAP Touch Safety glass				
Mounting	Panel mount (drop-in)				
Platform ECO Line	Intel Atom® Platform Intel® Pentium® Quad Core™ N4200				
Platform PRO Line	Intel® Core™ ULT Platform Intel® Celeron™ 3965U or Intel® Core™ i5-7300U				
Configuration options	Up to 32GB RAM, up to 1TB SSD, Serial Ports, RFID				
Supported OS	Windows 10 IoT, Linux				

Flexible configuration

FLATCLIENT MAR - HIGHLIGHTS



Ready for use

- ▶ DNVGL Type approval
- ▶ Compliant to EN 60945 / IACS E10
- ▶ Based on market proven FlatClient platform
- ▶ Highly configurable, easy to modify
- ▶ Long-term available

Robust design

- ▶ Super resistant glass front, totally flush with edge protection
- ▶ Anti-glare front surface with anti-fingerprint
- ▶ Salt spray tested acc. EN 60068-2-52
- ▶ Isolated 24VDC PWR-IN
- ▶ Designed for 24/7 operation

Technology & Support

- ▶ Compliant to various cloud platforms
- ▶ TPM 2.0 / Wibu security option
- ▶ Field assistance by in-house EMC-chamber, environmental chamber, ESD
- ▶ Windows and Linux support

OUR CHANGING WORLD IS FILLED WITH
BOUNDLESS OPPORTUNITIES



WE LOOK FORWARD TO
EXPLORING THEM WITH YOU