


CONTINUED VME PLATFORM ADVANCEMENTS AND SUPPORT TO LEGACY PROGRAMS

VME PROCESSOR BOARDS


	VM6103	VM6062
CPU	L51023 «Layerscape» 2-core ARM	Intel® Xeon® D 2-core Intel® Dual Graphics Mezzanine
SDRAM (max.)	4 GByte with ECC	8 GByte with ECC
TARGET APPLICATIONS	< 10 W	High performance graphics support

Power ARM



- ▶ VM6250B
- ▶ VM6103

x86



- ▶ PENTXM2
- ▶ PENTXM4
- ▶ VM6050
- ▶ VM6052, VM6054
- ▶ VM6062, VM6064

PINOUT COMPATIBILITY ACROSS PROCESSOR FAMILIES

Mezzanine Carrier



Rear Transition Module



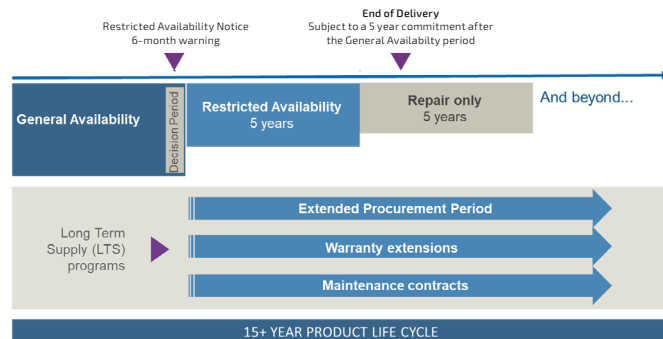
Front Panel I/Os



FULL COMPATIBILITY WITH LEGACY PRODUCTS

- ▶ Extensive I/O support
- ▶ High versatility and customization
- ▶ Long Term Supply
- ▶ Legacy compatibility

LONG TERM SUPPLY SERVICES



▶ Visit www.kontron.com/vme for our complete portfolio

ADVANCE SECURITY AND MONITORING CAPABILITIES

SEC-LINE: CYBER-SECURE BASELINE FOR MICRO CLOUDS DEPLOYMENTS



Security building blocks

- ▶ **Trusted Boot:** remotely detect system software alteration
- ▶ **Secure Boot:** restrict boot to signed images
- ▶ **Trusted Platform Module:** secure all secrets, prevent device cloning
- ▶ **Approtect:** protect application code
- ▶ **Software vulnerability wath:** receive alerts on discovered vulnerabilities and fixes

CMON-LINE: OPEN DATA HEALTH MONITORING

- ▶ Live demo at kfrlabs.kontron.com/monitoring.php#Demo

SERVICES AND SUPPORT

- ▶ Technical assistance & technology evaluation:
 - ✉ support.KFR@kontron.com
- ▶ Configuration control & Asset management services
Long Term deliveries & Warranty Extensions,
COTS tailorization & Program Management:
 - ✉ sales.KFR@kontron.com

YOUR CONTACT

Kontron France

150 rue Marcellin Berthelot
Zl de Toulon-Est -BP 244
83078 Toulon Cedex 9
Tel.: +33 4 98 16 34 00
sales.KFR@kontron.com

www.kontron.com

GLOBAL HEADQUARTERS

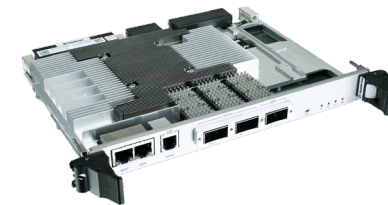
Kontron Europe GmbH

Gutenbergstraße 2
85737 Ismaning, Germany
Tel.: +49 821 4086-0
info@kontron.com

www.kontron.com

VME-VPX

Rugged COTS modules and subsystems



VPX

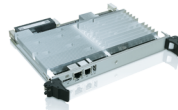
SOSA
Sensor Open System Architecture

POSSIBILITIES START HERE  **kontron**
S&T Group

Copyright © 2022 Kontron. All rights reserved. All data is for information purposes only and not guaranteed for legal purposes. Information has been carefully checked and is believed to be accurate; however, no responsibility is assumed for inaccuracies. Kontron and the Kontron logo and all other trademarks or registered trademarks are the property of their respective owners and are recognized. Specifications are subject to change without notice. Shortcode: VPX-20220531 - WMH

VPX PROCESSOR BOARDS

3U	VX3070	VX3060-S4	VX3060-S2	VX3060	VX305X-40G	VX305X	VX3106
CPU	Intel® Xeon® D-2700	4-Core Intel® 11th Gen with Gfx Gen12	4-Core Intel® 11th Gen with Gfx Gen12	4-Core Intel® 11th Gen with Gfx Gen12	8 and 12-Core Xeon®-D	8 and 12-Core Xeon®-D	Arm® 4-Core LS1046A
ETHERNET	10/40/100 GETH	10/40 GETH	10 GETH	10 GETH	40GETH	10GETH	10GETH
SDRAM (MAX.)	32/64 GB DDR4 w ECC	16/32 GB DDR4 w ECC	32 GB DDR4 w ECC	16 GB DDR4 w ECC	16/32 GB DDR4 w ECC	32 GB DDR4 w ECC	8 GB DDR4 w ECC
TARGET APPLICATION	HPEC. Computer vision, media processing and crypto applications	High speed networking applications	Any application requiring good power/performance ratio	Upgrade of legacy applications	Radar, sonar Imaging systems Airborne fighter and UAV radar	Fit for Virtual Machines and HPEC applications	General purpose Arm® computer for networking and safety applications



6U	VX6090	VX6058	VX6124
CPU	Dual 12-Core (or 8-Core) Xeon® D	8-Core Intel® Xeon® D	16 Arm® Cortex®-A72 cores @ 2.0 GHz NXP LX2160A SOC
ETHERNET	10 GETH	10 GETH	10/40/100 GETH
SDRAM (MAX.)	32 GByte DDR4 w ECC	16 GByte w ECC	32 GByte DDR4 w ECC
TARGET APPLICATION	High Performance: imaging, radar and embedded server	Value line general purpose SBC: 10G/40G upgrade of 1G Ethernet switched signal processing systems.	Applications requiring outstanding bandwidth and digital security

STREAMLING DEVELOPMENT TO DEPLOYMENT

► Development Platforms

► High Performance Embedded Computing (HPEC) Platforms

► Rugged Mission Computers

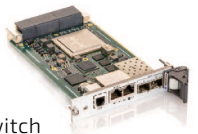
► Custom Configuration



VPX PERIPHERALS AND I/O BOARDS

3U VPX SWITCHES

- VX3940 L2/L3 10G/40G/50G Ethernet Switch
- VX3920 High End L2/L3 OpenVPX 10/40G Switch



3U VPX CARRIERS

- VX3836 Xilinx® Virtex®-6 FPGA Processor Board with FMC Site
- VX3800 PMC/XMC Carrier Card



6U VPX SWITCHES

- VX6940 L2/L3 High performance 40G/100G Ethernet Switch



DARC-VX208

High performance secure rugged computer

- Intel® Core™i7-1185GRE quad-core processor with 15-years lifetime from 2021
- 2x 10GbE LAN ports, optional GPU and dual DVI ports
- Fully sealed enclosure
- Compliant to MIL-STD810, MIL-STD-1275, MIL-STD461
- Made in France, ITAR free

